

ASYLUM STATISTICS APRIL 2022

SURVEY

APPLICATIONS FOR INTERNATIONAL PROTECTION		April 2022	2022
Number of persons who filed a first application for international protection (resettlement not included)		1.936	8.951
Number of persons who filed a first application for international protection in the context of resettlement		9	32
Number of persons who filed a subsequent application for international protection		388	1.567
Total number of persons who filed an application for international protection		2.333	10.550
DECISIONS		April 2022	2022
Intermediary decisions			
Number of persons for whom a further assessment (border) was decided + number of persons whose subsequent application was declared admissible		46	253
Final decisions			
Number of persons who received a decision granting refugee status		494	2.346
Number of persons who received a decision granting subsidiary protection status		37	135
Number of persons whose application was declared inadmissible		305	1.375
Number of persons whose application was considered manifestly unfounded		62	304
Number of persons who received a decision refusing refugee status and refusing subsidiary protection status		364	2.049
Number of persons whose status was ended or revoked		5	43
Total number of persons who received a decision regarding their application for international protection		1.313	6.505
CASELOAD		End of April 2022	
		16.929 cases	

Date of publication: May 2022

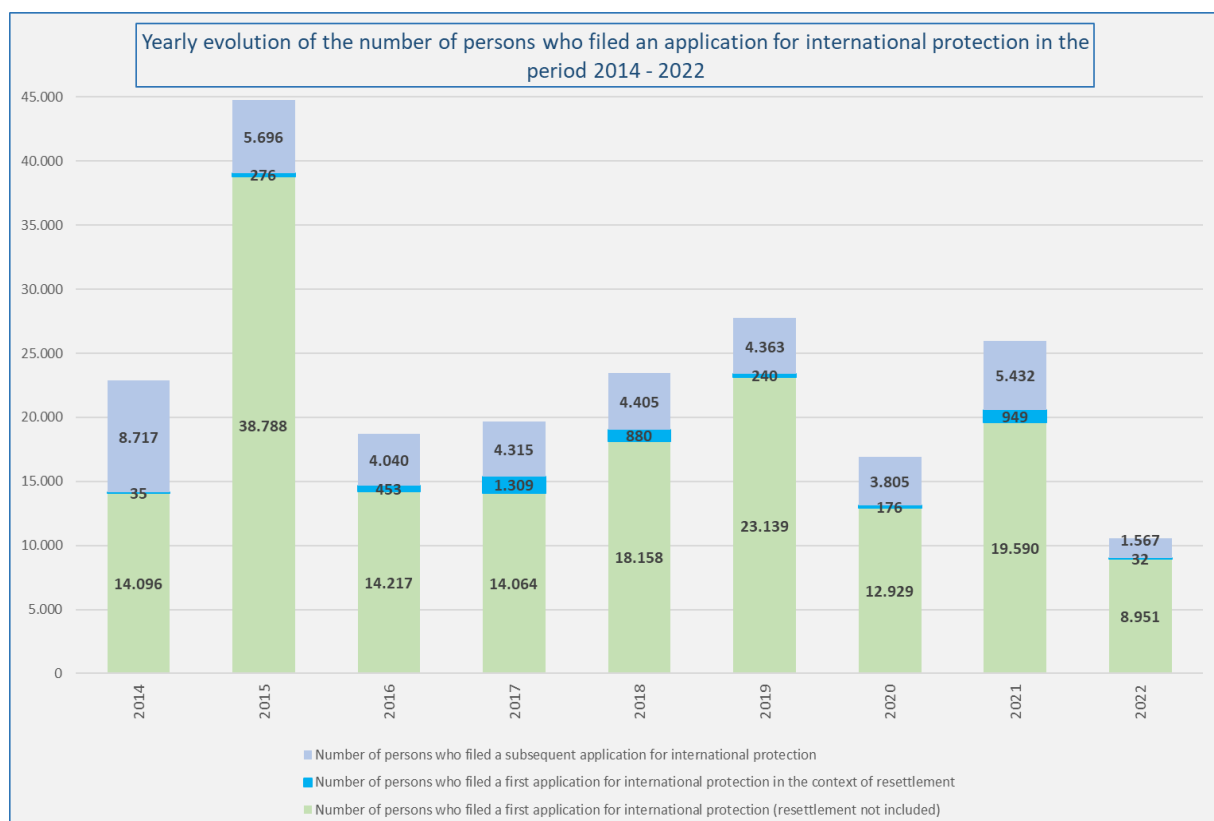
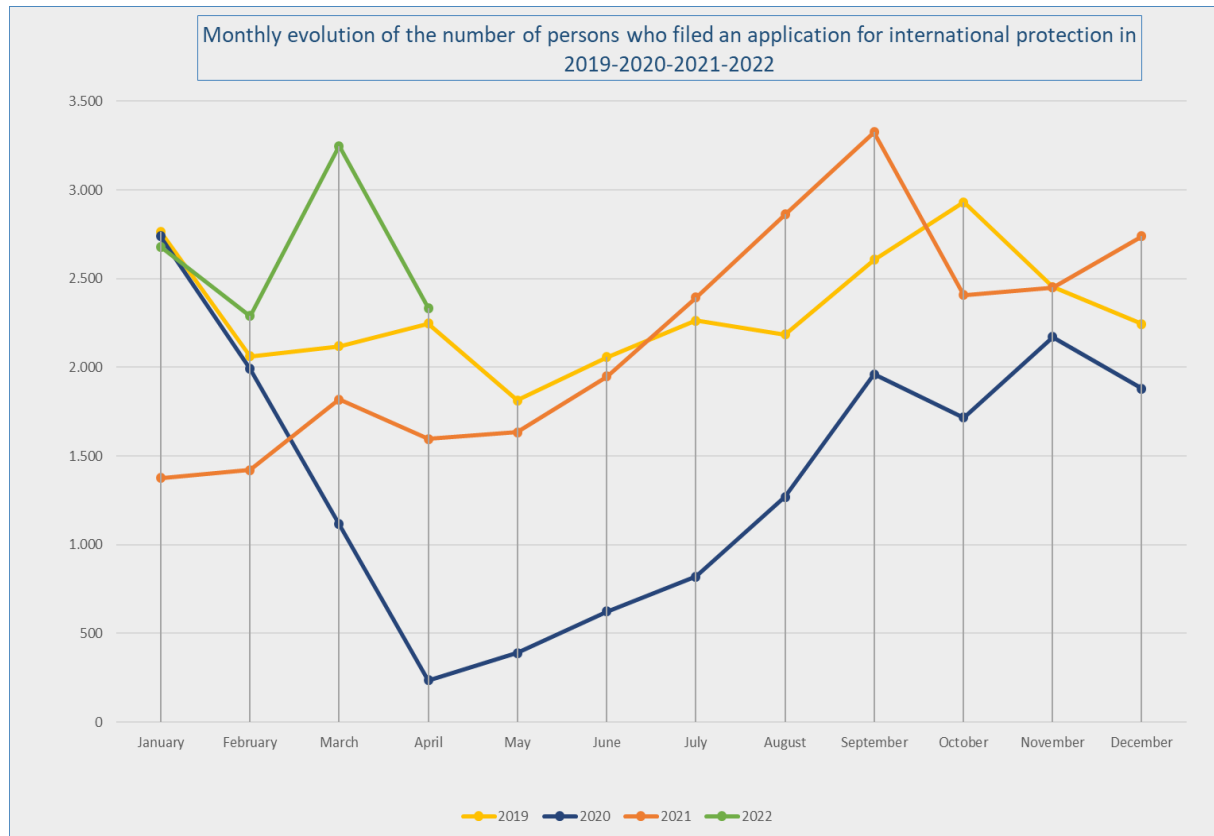
Contact person : Damien Dermaux

Damien.Dermaux@ibz.fgov.be

02 205 54 83

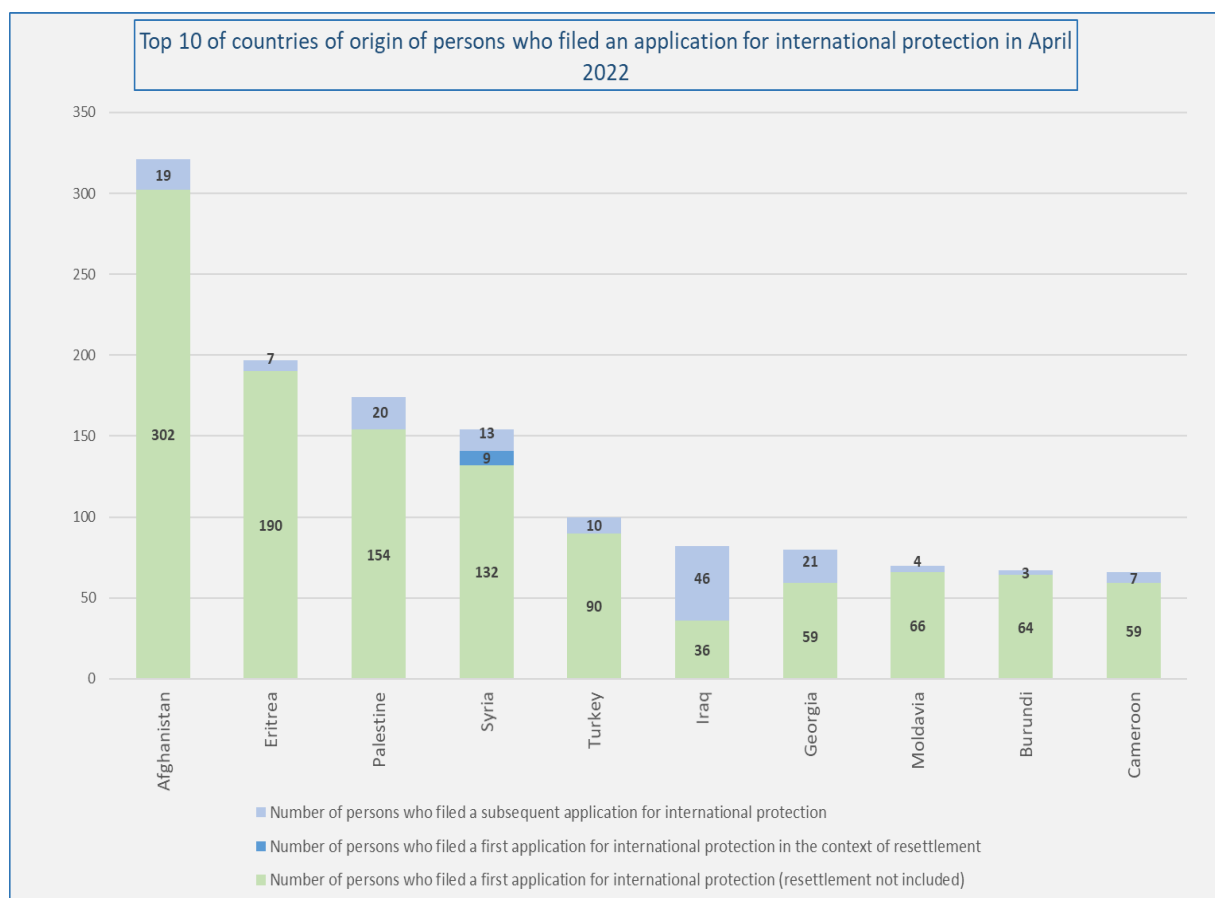
APPLICATIONS FOR INTERNATIONAL PROTECTION (Source: Immigration Office)

Number of persons who filed an application for international protection in 2021 and 2022				
	Total number of persons who filed an application for international protection 2021	Number of persons who filed a first application for international protection 2021 (resettlement not included)	Number of persons who filed a first application for international protection 2021 in the context of resettlement	Number of persons who filed a subsequent application for international protection 2021
January	1.377	957	0	420
February	1.422	964	0	458
March	1.818	1.133	165	520
April	1.595	1.176	10	409
May	1.634	1.088	172	374
June	1.948	1.453	21	474
July	2.392	1.647	274	471
August	2.862	2.087	3	772
September	3.326	2.619	237	470
October	2.407	2.033	15	359
November	2.451	2.020	47	384
December	2.739	2.413	5	321
Total	25.971	19.590	949	5432
	Total number of persons who filed an application for international protection 2022	Number of persons who filed a first application for international protection 2022 (resettlement not included)	Number of persons who filed a first application for international protection 2022 in the context of resettlement	Number of persons who filed a subsequent application for international protection 2022
January	2.680	2.208	15	457
February	2.290	1.885	0	405
March	3.247	2.922	8	317
April	2.333	1.936	9	388
May				
June				
July				
August				
September				
October				
November				
December				
Total	10.550	8.951	32	1.567

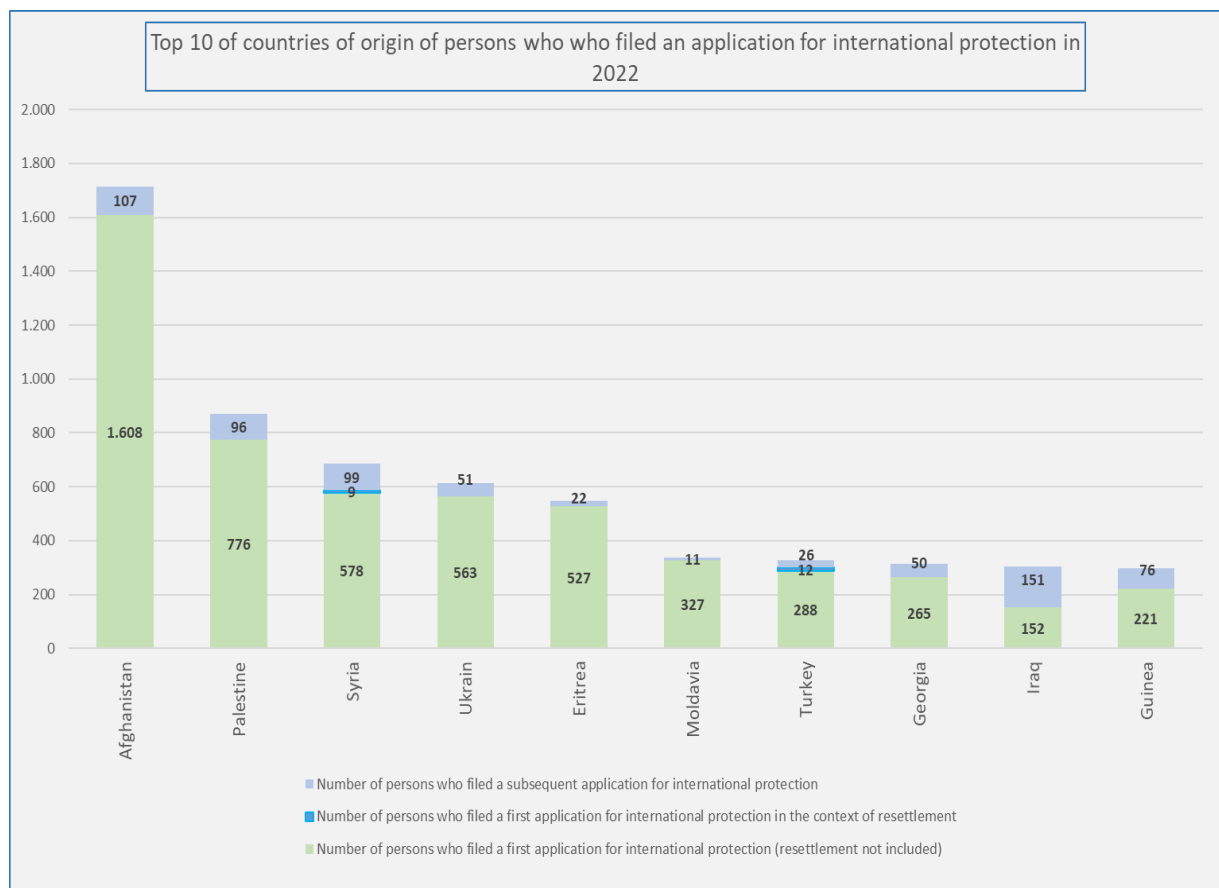


TOP 10 OF COUNTRIES OF ORIGIN (Source: Immigration Office)

Top 10 of countries of origin of persons who filed an application for international protection in April 2022					
	Country of origin	Total number of persons who filed an application for international protection	Number of persons who filed a first application for international protection (resettlement not included)	Number of persons who filed a first application for international protection in the context of resettlement	Number of persons who filed a subsequent application for international protection
1	Afghanistan	321	302	0	19
2	Eritrea	197	190	0	7
3	Palestine	174	154	0	20
4	Syria	154	132	9	13
5	Turkey	100	90	0	10
6	Iraq	82	36	0	46
7	Georgia	80	59	0	21
8	Moldavia	70	66	0	4
9	Burundi	67	64	0	3
10	Cameroon	66	59	0	7
	Other countries	1.022	784	0	238
	Total April	2.333	1.936	9	388



Top 10 of countries of origin of persons who who filed an application for international protection in 2022					
	Country of origin	Total number of persons who filed an application for international protection	Number of persons who filed a first application for international protection (resettlement not included)	Number of persons who filed a first application for international protection in the context of resettlement	Number of persons who filed a subsequent application for international protection
1	Afghanistan	1.715	1.608	0	107
2	Palestine	872	776	0	96
3	Syria	686	578	9	99
4	Ukraine	614	563	0	51
5	Eritrea	549	527	0	22
6	Moldavia	338	327	0	11
7	Turkey	326	288	12	26
8	Georgia	315	265	0	50
9	Iraq	303	152	0	151
10	Guinea	297	221	0	76
	Other countries	4.535	3.646	11	878
	Total 2022	10.550	8.951	32	1.567



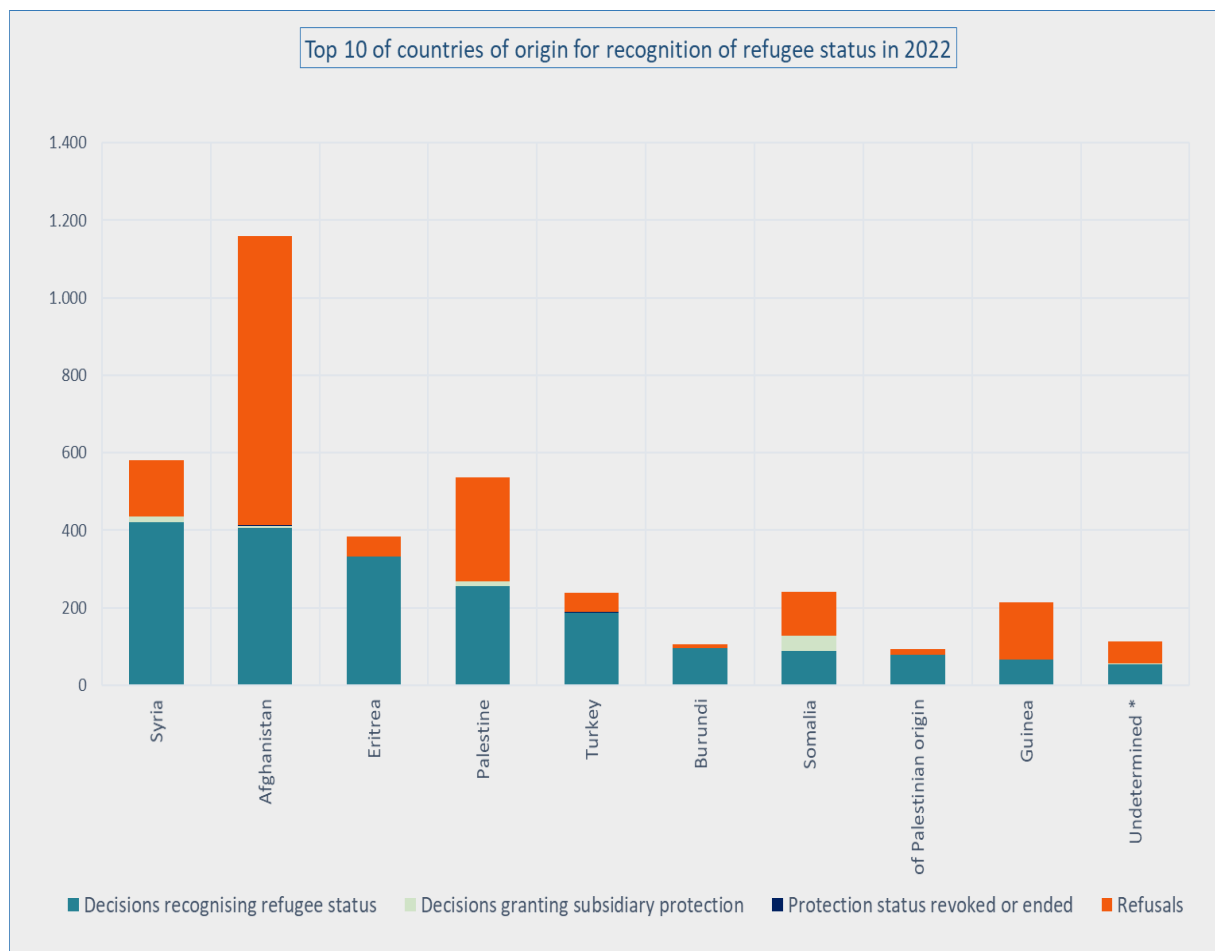
DECISIONS (Source: CGRS)

Number of persons who received a decision regarding their application for international protection													
Decisions	Jan	Feb	Mar	Apr	May	Jun	Jul	Aug	Sep	Oct	Nov	Dec	Tot
Intermediary decisions													
Number of persons for whom a further assessment (border) was decided + number of persons whose subsequent application was declared admissible	57	92	58	46									253
Final decisions													
Number of persons who received a decision granting refugee status	460	757	635	494									2.346
Number of persons who received a decision granting subsidiary protection status	27	35	36	37									135
Number of persons whose application was declared inadmissible	224	285	561	305									1.375
Number of persons whose application was considered manifestly unfounded	49	132	61	62									304
Number of persons who received a decision refusing refugee status and refusing subsidiary protection status	296	516	873	364									2.049
Number of persons whose status was ended or revoked	5	14	19	5									43
Total number of persons who received a decision regarding their application for international protection	1.118	1.831	2.243	1.313									6.505

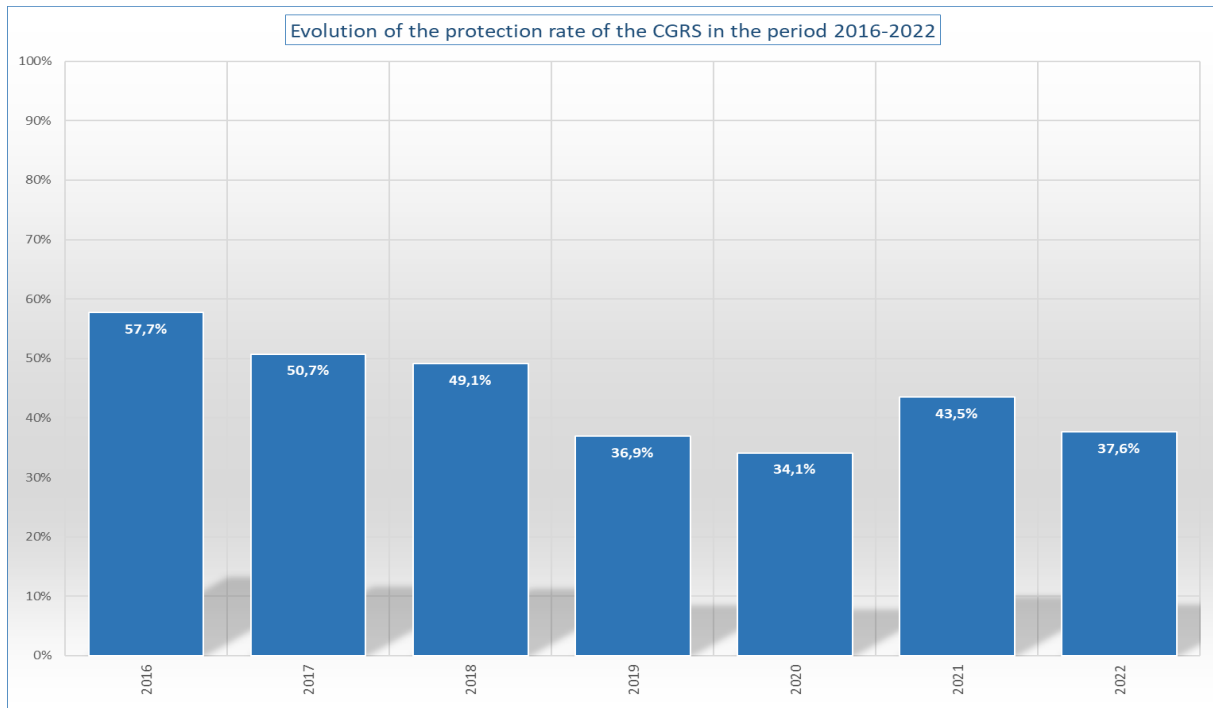
Number of decisions (cases)													
Decisions	Jan	Feb	Mar	Apr	May	Jun	Jul	Aug	Sep	Oct	Nov	Dec	Tot
Intermediary decisions													
Further assessment (border) + subsequent application declared admissible	54	72	51	40									217
Final decisions													
Recognition of refugee status (RS)	342	579	497	367									1.785
Granting of subsidiary protection status (SP)	26	31	33	29									119
Application declared inadmissible	187	225	500	259									1.171
Application considered manifestly unfounded	38	77	46	45									206
Refusal of refugee status and refusal of subsidiary protection status	246	435	780	318									1.779
Protection status revoked or ended	5	9	17	5									36
Total number of decisions	898	1.428	1.924	1.063	0	0	0	0	0	0	0	0	5.313

Top 10 of countries of origin for recognition of refugee status in 2022						
	Country of origin	Decisions recognising refugee status	Decisions granting subsidiary protection	Protection status revoked or ended	Refusals	Total number of final decisions *
1	Syria	421	15	0	145	581
2	Afghanistan	405	5	3	747	1.160
3	Eritrea	331	0	1	51	383
4	Palestine	257	11	1	268	537
5	Turkey	188	0	1	49	238
6	Burundi	95	0	1	10	106
7	Somalia	88	39	0	114	241
8	of Palestinian origin	79	0	0	15	94
9	Guinea	66	0	0	148	214
10	Undetermined *	55	1	0	57	113
	Other countries	361	64	36	2.124	2.585
	Total 2022	2.346	135	43	3.728	6.252

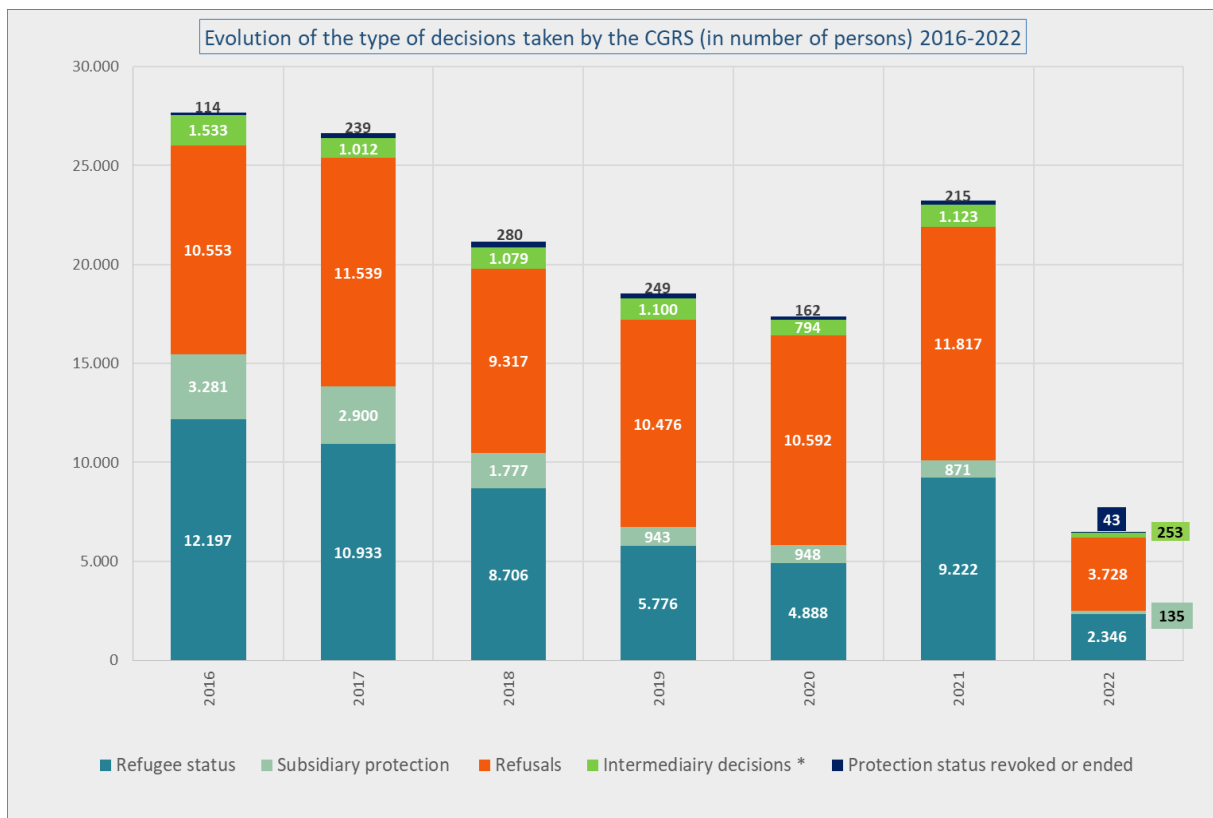
* The decisions 'further assessment (border) and subsequent application declared admissible' are a kind of intermediary decision and are therefore **not included** in the final decisions.



* 'Undetermined' includes persons whose nationality could not be ascertained, stateless persons,...



* The protection rate is the percentage of applications leading to recognition of refugee status or granting of subsidiary protection status compared to the total number of final decisions (= total number of decisions – the intermediary decisions) - the number of files where the protection status was revoked or ended.



* 'Intermediary decisions' are the decisions 'further assessment (border) and subsequent application declared admissible.'

CASELOAD (Source: CGRS)

At the end of April 2022, the total workload amounted to **16,929** cases (20,200 persons). In view of the current inflow, a volume of **4,200** dossiers can be considered as a normal caseload. The actual backlog amounts to **12,729** cases.

