

## ASYLUM STATISTICS FEBRUARY 2024

### SURVEY

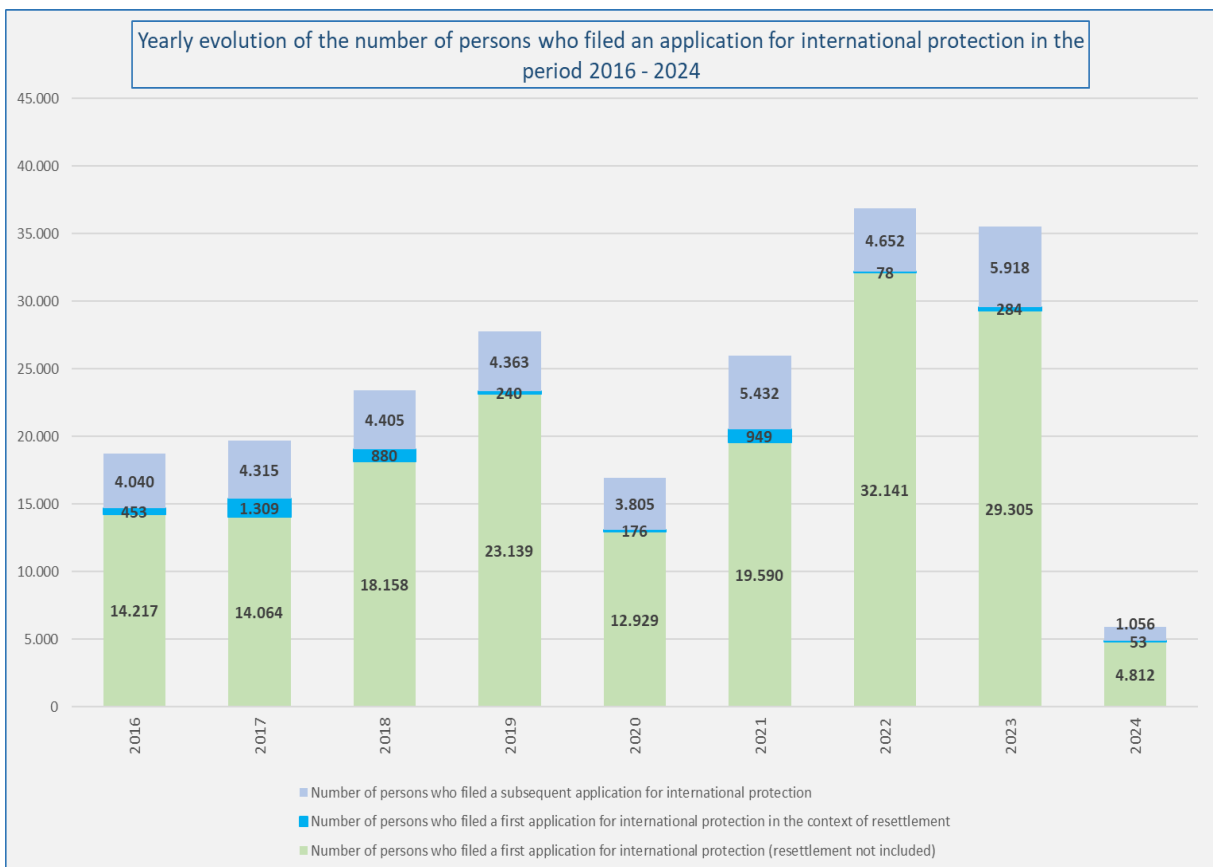
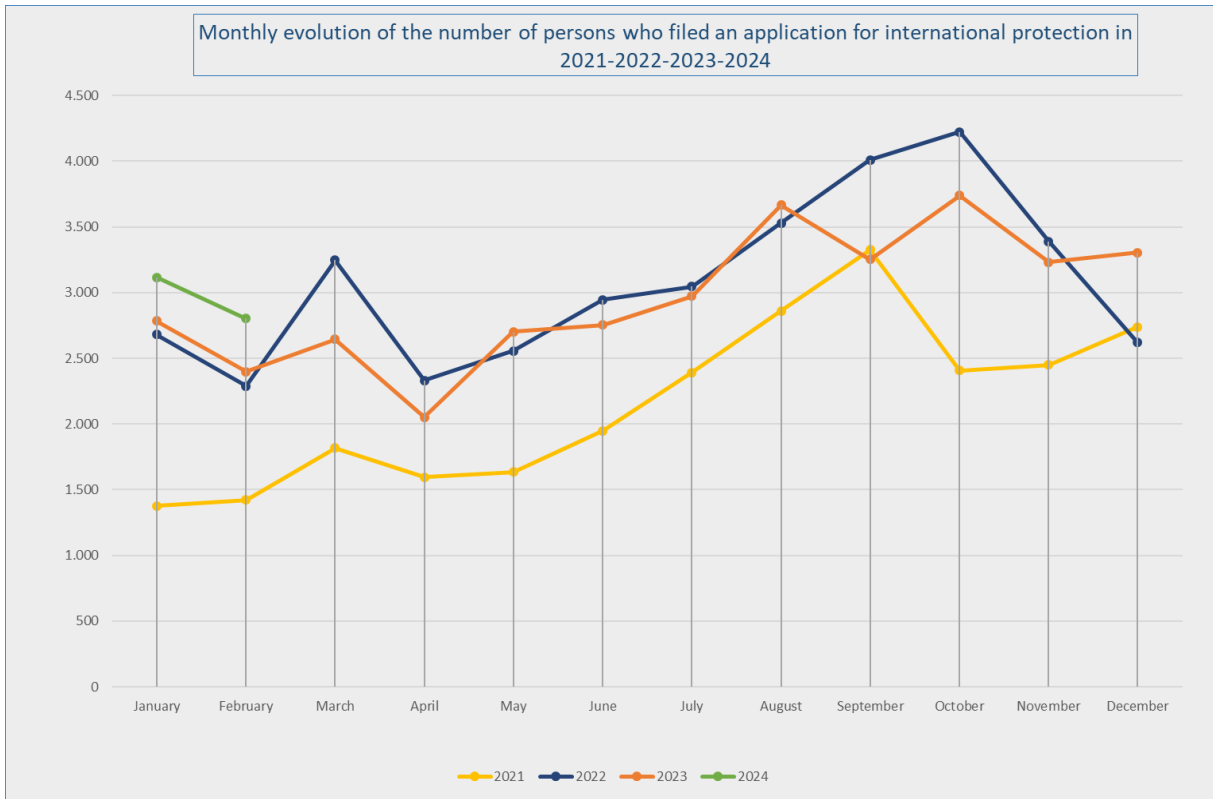
APPLICATIONS FOR INTERNATIONAL PROTECTION		February 2024	2024
Number of persons who filed a first application for international protection (resettlement not included)		2.217	4.812
Number of persons who filed a first application for international protection in the context of resettlement		42	53
Number of persons who filed a subsequent application for international protection		545	1.056
<b>Total number of persons who filed an application for international protection</b>		<b>2.804</b>	<b>5.921</b>
DECISIONS		February 2024	2024
Intermediary decisions			
Number of persons for whom a further assessment (border) was decided + number of persons whose subsequent application was declared admissible		128	237
Final decisions			
Number of persons who received a decision granting refugee status		1.062	2.103
Number of persons who received a decision granting subsidiary protection status		46	91
Number of persons whose application was declared inadmissible		403	781
Number of persons whose application was considered manifestly unfounded		62	109
Number of persons who received a decision refusing refugee status and refusing subsidiary protection status		964	1.677
Number of persons whose status was ended or revoked		2	5
<b>Total number of persons who received a decision regarding their application for international protection</b>		<b>2.667</b>	<b>5.003</b>
CASELOAD		End of February 2024	
		<b>27.702 cases</b>	

Date of publication: March 2024

Contact: [CGRA-CGVS.Communication@ibz.be](mailto:CGRA-CGVS.Communication@ibz.be)

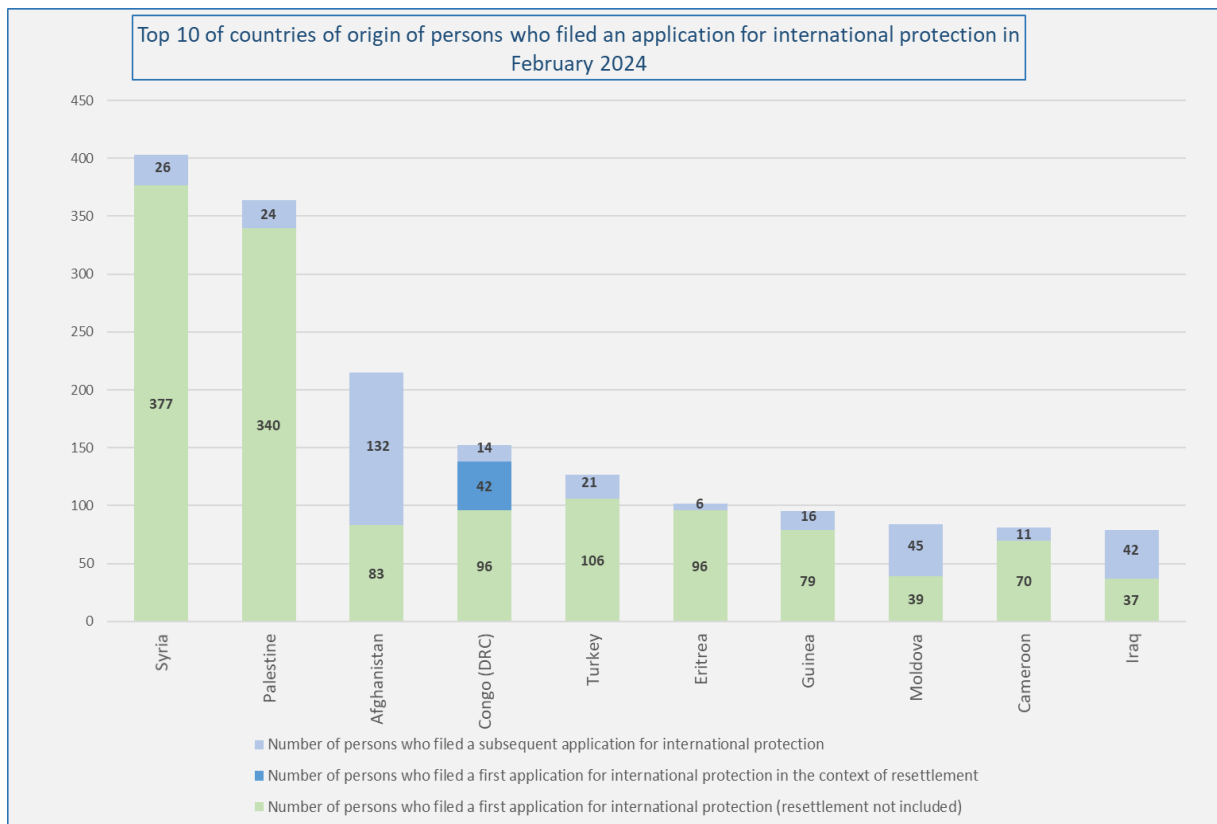
APPLICATIONS FOR INTERNATIONAL PROTECTION (Source: Immigration Office)

Number of persons who filed an application for international protection in 2023 and 2024				
2023	Total number of persons who filed an application for international protection 2023	Number of persons who filed a first application for international protection 2023 (resettlement not included)	Number of persons who filed a first application for international protection 2023 in the context of resettlement	Number of persons who filed a subsequent application for international protection 2023
January	2.785	2.286	8	491
February	2.399	1.944	0	455
March	2.644	2.038	10	596
April	2.053	1.628	0	425
May	2.703	2.237	0	466
June	2.755	2.231	15	509
July	2.972	2.479	0	493
August	3.666	3.131	27	508
September	3.254	2.756	20	478
October	3.740	3.124	102	514
November	3.232	2.733	9	490
December	3.304	2.718	93	493
<b>Total</b>	<b>35.507</b>	<b>29.305</b>	<b>284</b>	<b>5.918</b>
2024	Total number of persons who filed an application for international protection 2024	Number of persons who filed a first application for international protection 2024 (resettlement not included)	Number of persons who filed a first application for international protection 2024 in the context of resettlement	Number of persons who filed a subsequent application for international protection 2024
January	3.117	2.595	11	511
February	2.804	2.217	42	545
March				
April				
May				
June				
July				
August				
September				
October				
November				
December				
<b>Total</b>	<b>5.921</b>	<b>4.812</b>	<b>53</b>	<b>1.056</b>

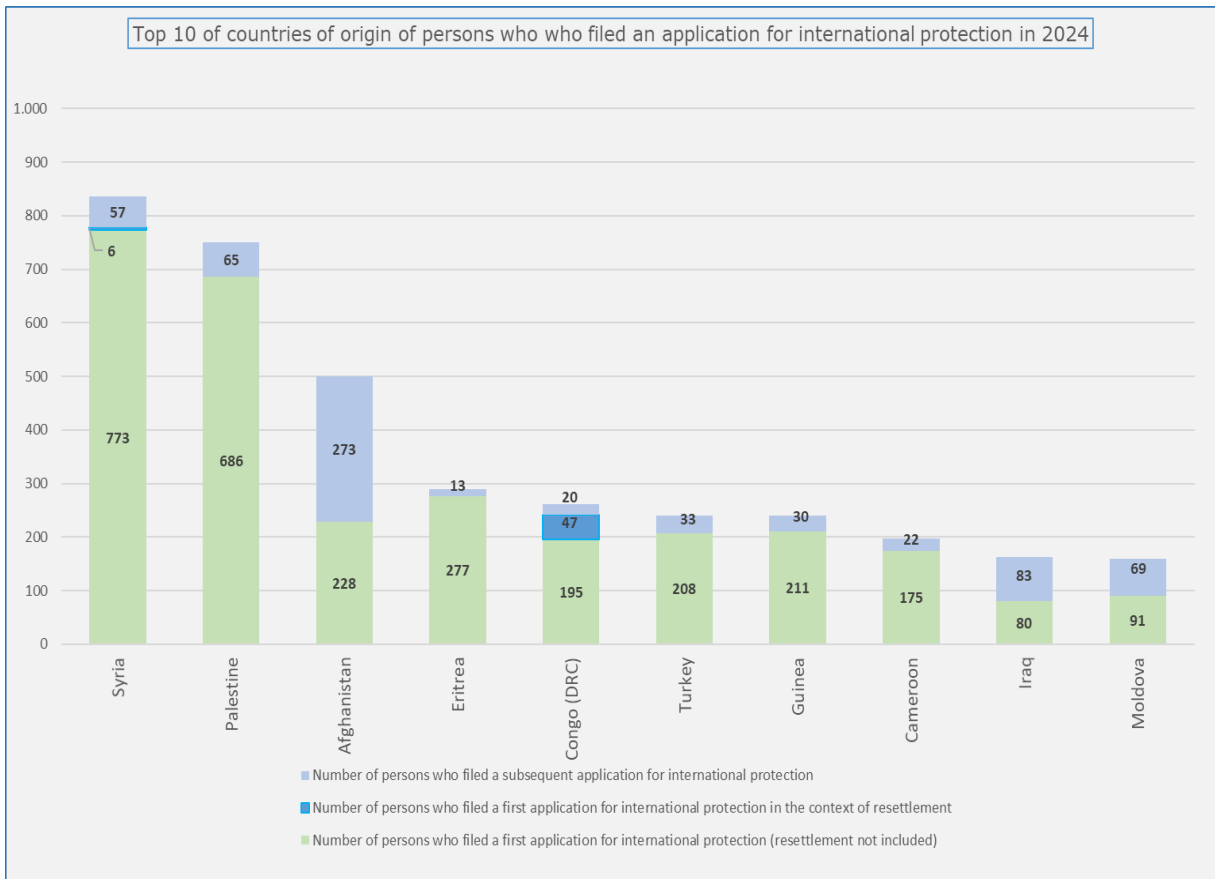


TOP 10 OF COUNTRIES OF ORIGIN (Source: Immigration Office )

Top 10 of countries of origin of persons who filed an application for international protection in February 2024					
Country of origin	Total number of persons who filed an application for international protection	Number of persons who filed a first application for international protection (resettlement not included)	Number of persons who filed a first application for international protection in the context of resettlement	Number of persons who filed a subsequent application for international protection	
1 Syria	403	377	0	26	
2 Palestine	364	340	0	24	
3 Afghanistan	215	83	0	132	
4 Congo (DRC)	152	96	42	14	
5 Turkey	127	106	0	21	
6 Eritrea	102	96	0	6	
7 Guinea	95	79	0	16	
8 Moldova	84	39	0	45	
9 Cameroon	81	70	0	11	
10 Iraq	79	37	0	42	
Other countries	1.102	894	0	208	
<b>Total February</b>	<b>2.804</b>	<b>2.217</b>	<b>42</b>	<b>545</b>	



Top 10 of countries of origin of persons who who filed an application for international protection in 2024					
	Country of origin	Total number of persons who filed an application for international protection	Number of persons who filed a first application for international protection (resettlement not included)	Number of persons who filed a first application for international protection in the context of resettlement	Number of persons who filed a subsequent application for international protection
1	Syria	836	773	6	57
2	Palestine	751	686	0	65
3	Afghanistan	501	228	0	273
4	Eritrea	290	277	0	13
5	Congo (DRC)	262	195	47	20
6	Turkey	241	208	0	33
7	Guinea	241	211	0	30
8	Cameroon	197	175	0	22
9	Iraq	163	80	0	83
10	Moldova	160	91	0	69
	Other countries	2.279	1.888	0	391
	<b>Total 2024</b>	<b>5.921</b>	<b>4.812</b>	<b>53</b>	<b>1.056</b>



DECISIONS (Source: CGRS)

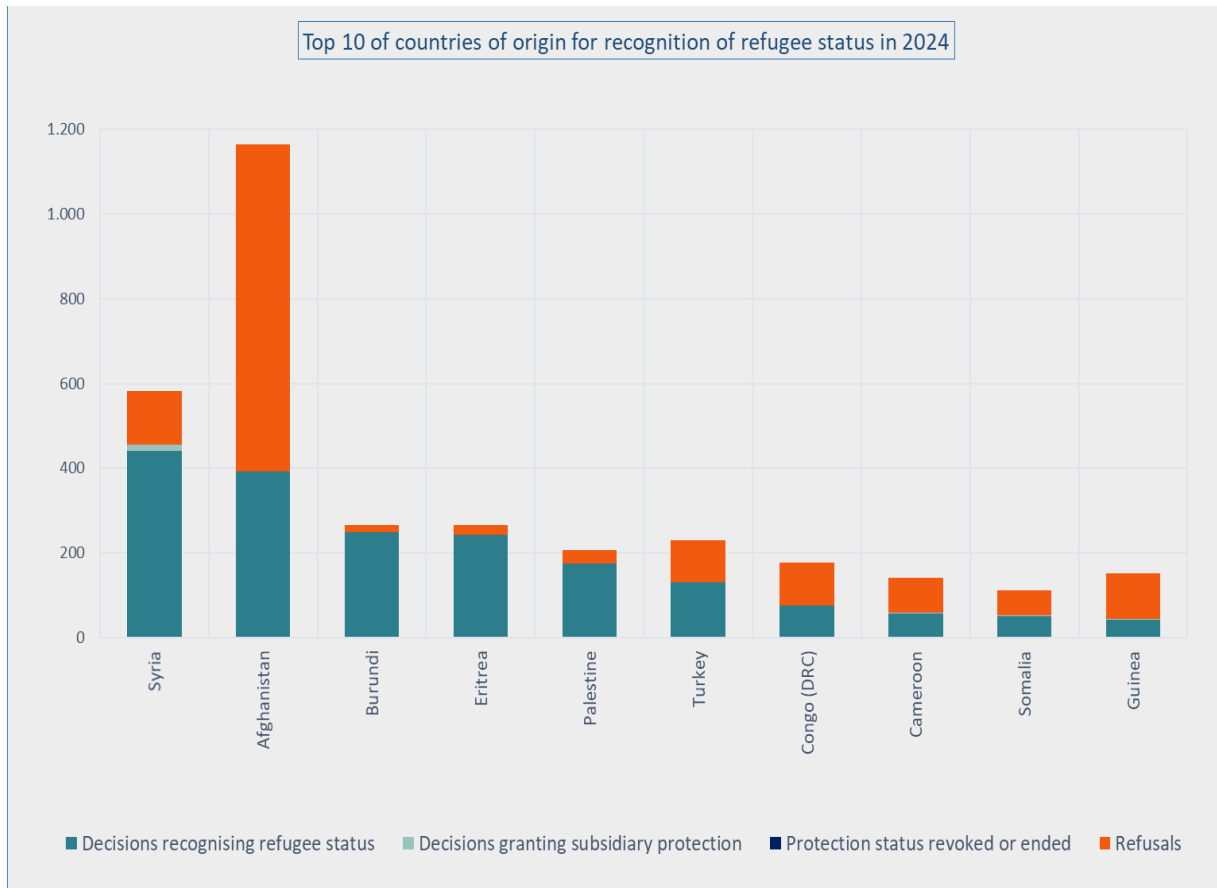
Number of persons who received a decision regarding their application for international protection													
Decisions	Jan	Feb	Mar	Apr	May	Jun	Jul	Aug	Sep	Oct	Nov	Dec	Tot
<b>Intermediary decisions</b>													
Number of persons for whom a further assessment (border) was decided + number of persons whose subsequent application was declared admissible	109	128											237
<b>Final decisions</b>													
Number of persons who received a decision granting refugee status	1.041	1.062											2.103
Number of persons who received a decision granting subsidiary protection status	45	46											91
Number of persons whose application was declared inadmissible	378	403											781
Number of persons whose application was considered manifestly unfounded	47	62											109
Number of persons who received a decision refusing refugee status and refusing subsidiary protection status	713	964											1.677
<b>Number of persons whose status was ended or revoked</b>	<b>3</b>	<b>2</b>											<b>5</b>
<b>Total number of persons who received a decision regarding their application for international protection</b>	<b>2.336</b>	<b>2.667</b>											<b>5.003</b>



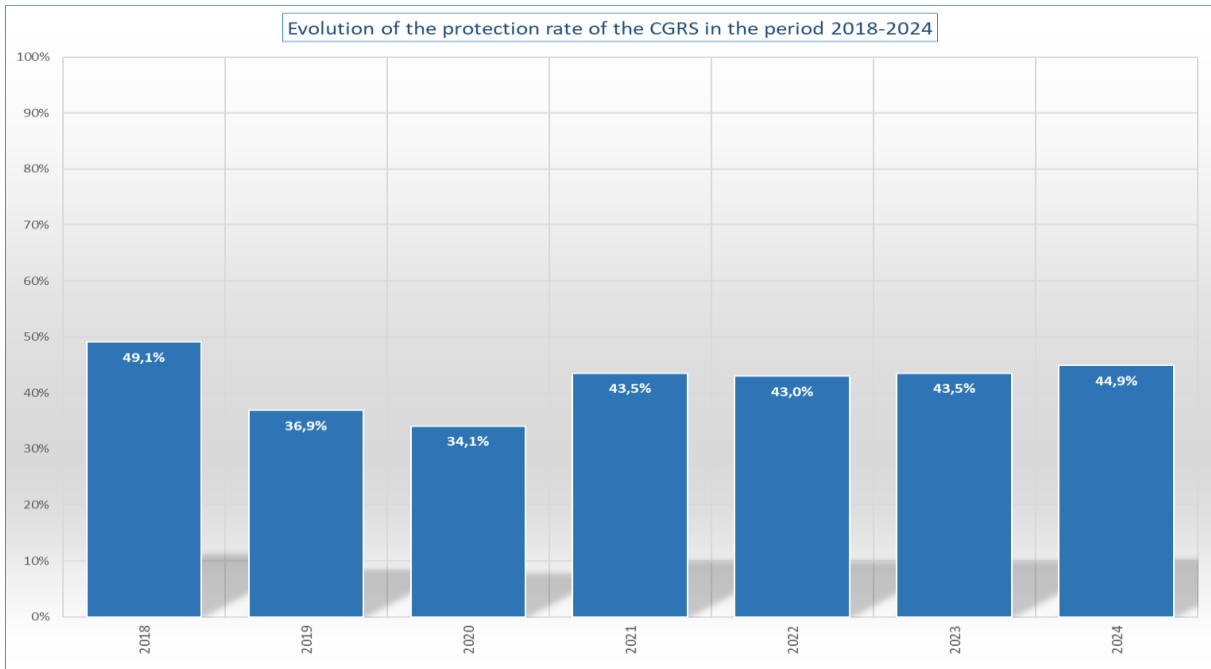
	Number of decisions (cases)												
Decisions	Jan	Feb	Mar	Apr	May	Jun	Jul	Aug	Sep	Oct	Nov	Dec	Tot
<b>Intermediary decisions</b>													
Further assessment (border) + subsequent application declared admissible	91	106											197
<b>Final decisions</b>													
Recognition of refugee status (RS)	835	884											1.719
Granting of subsidiary protection status (SP)	41	39											80
Application declared inadmissible	304	355											659
Application considered manifestly unfounded	33	36											69
Refusal of refugee status and refusal of subsidiary protection status	641	843											1.484
<b>Protection status revoked or ended</b>	3	2											5
<b>Total number of decisions</b>	1.948	2.265											4.213

Top 10 of countries of origin for recognition of refugee status in 2024						
	Country of origin	Decisions recognising refugee status	Decisions granting subsidiary protection	Protection status revoked or ended	Refusals	Total number of final decisions *
1	Syria	440	15	1	126	582
2	Afghanistan	392	0	1	772	1.165
3	Burundi	248	0	0	18	266
4	Eritrea	242	0	0	24	266
5	Palestine	175	0	0	32	207
6	Turkey	130	0	0	99	229
7	Congo (DRC)	76	0	0	100	176
8	Cameroon	57	1	0	83	141
9	Somalia	51	2	0	58	111
10	Guinea	43	1	0	107	151
	Other countries	249	72	3	1.148	1.472
	<b>Total 2024</b>	<b>2.103</b>	<b>91</b>	<b>5</b>	<b>2.567</b>	<b>4.766</b>

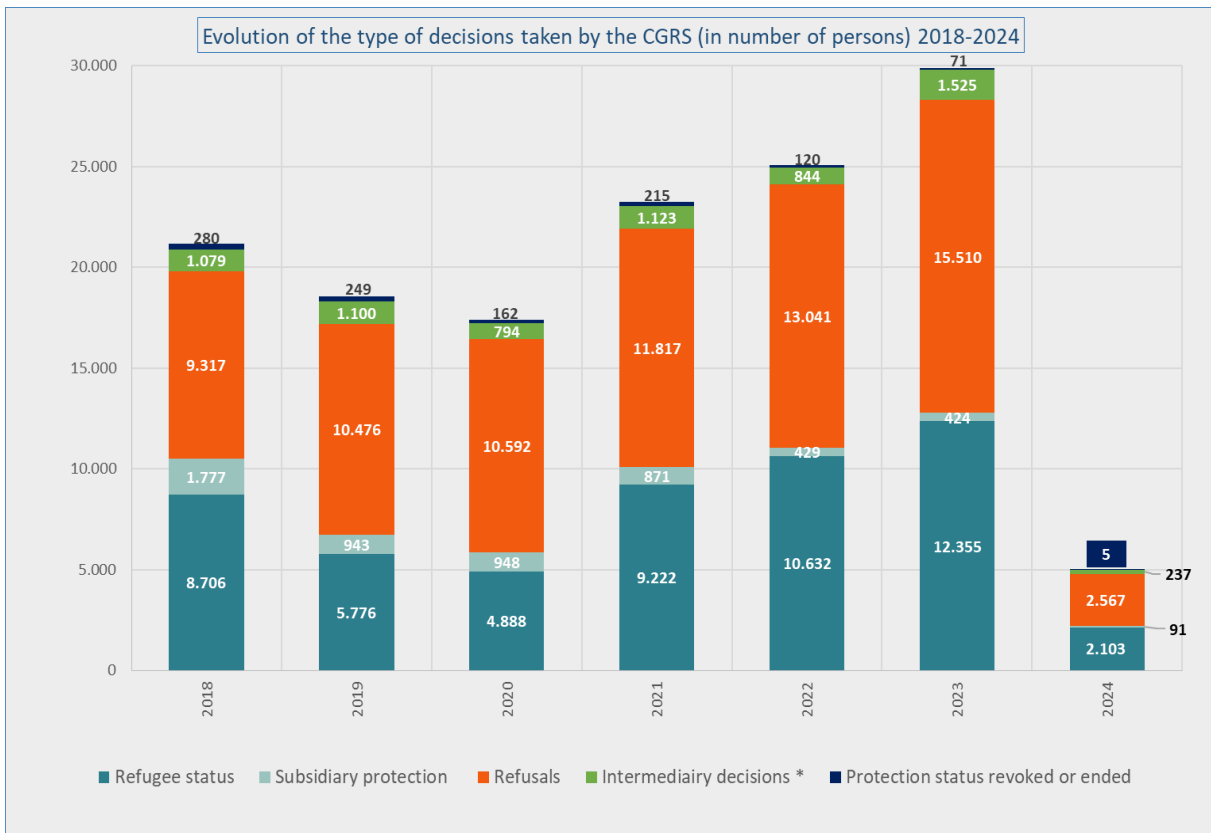
\* The decisions 'further assessment (border) and subsequent application declared admissible' are a kind of intermediary decision and are therefore **not included** in the final decisions.







\* The protection rate is the percentage of applications leading to recognition of refugee status or granting of subsidiary protection status compared to the total number of final decisions (= total number of decisions – the intermediary decisions) - the number of files where the protection status was revoked or ended.



\* 'Intermediary decisions' are the decisions 'further assessment (border) and subsequent application declared admissible.'

CASELOAD (Source: CGRS)

At the end of February 2024, the total workload amounted to **27,702** cases (33,624 persons). In view of the current inflow and the expansion of the workforce (more applications are being processed) 6,500 dossiers can be considered as a normal caseload. The actual backlog amounts to **21,202** cases.

