

ASYLUM STATISTICS JANUARY 2022

SURVEY

APPLICATIONS FOR INTERNATIONAL PROTECTION		January 2022
Number of persons who filed a first application for international protection (resettlement not included)		2.208
Number of persons who filed a first application for international protection in the context of resettlement		15
Number of persons who filed a subsequent application for international protection		457
Total number of persons who filed an application for international protection		2.680
DECISIONS		January 2022
Intermediary decisions		
Number of persons for whom a further assessment (border) was decided + number of persons whose subsequent application was declared admissible		57
Final decisions		
Number of persons who received a decision granting refugee status		459
Number of persons who received a decision granting subsidiary protection status		27
Number of persons whose application was declared inadmissible		224
Number of persons whose application was considered manifestly unfounded		49
Number of persons who received a decision refusing refugee status and refusing subsidiary protection status		296
Number of persons whose status was ended or revoked		5
Total number of persons who received a decision regarding their application for international protection		1.117
CASELOAD		End of January 2022
		16.216 cases

Date of publication: February 2022

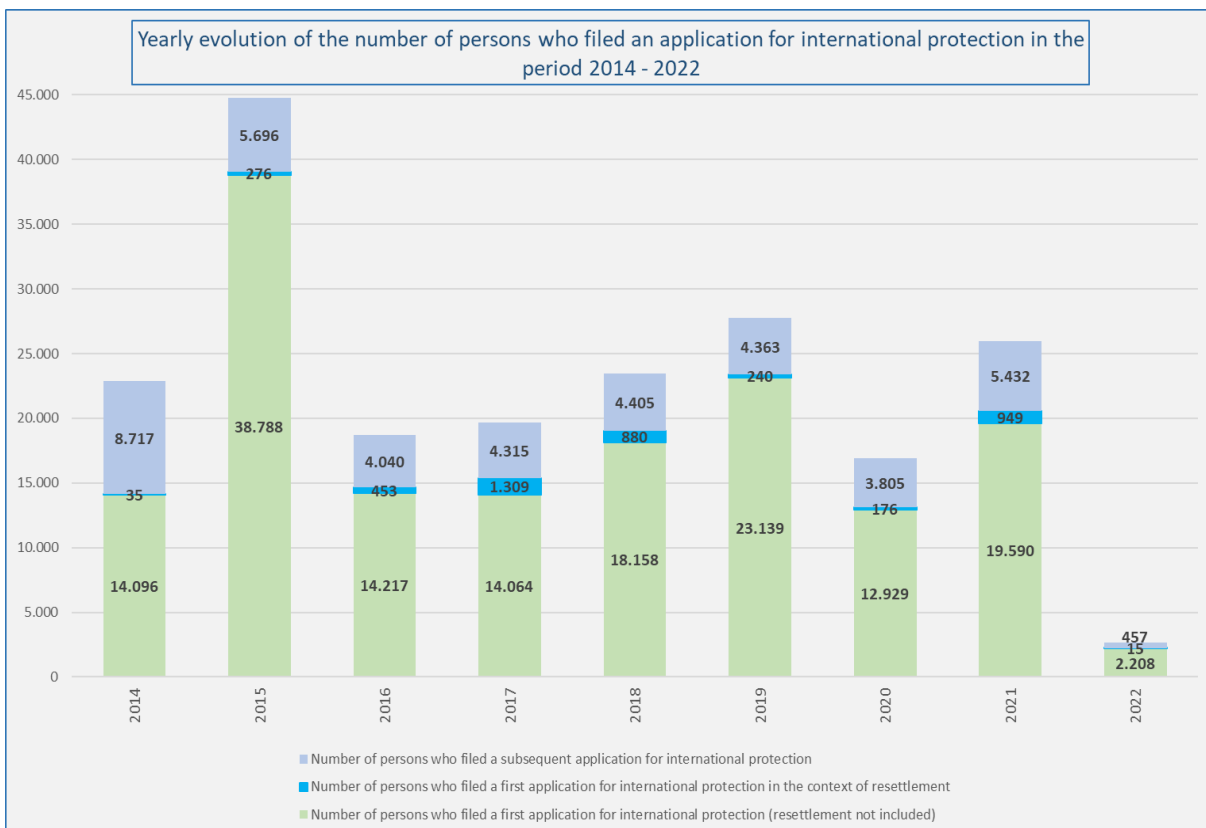
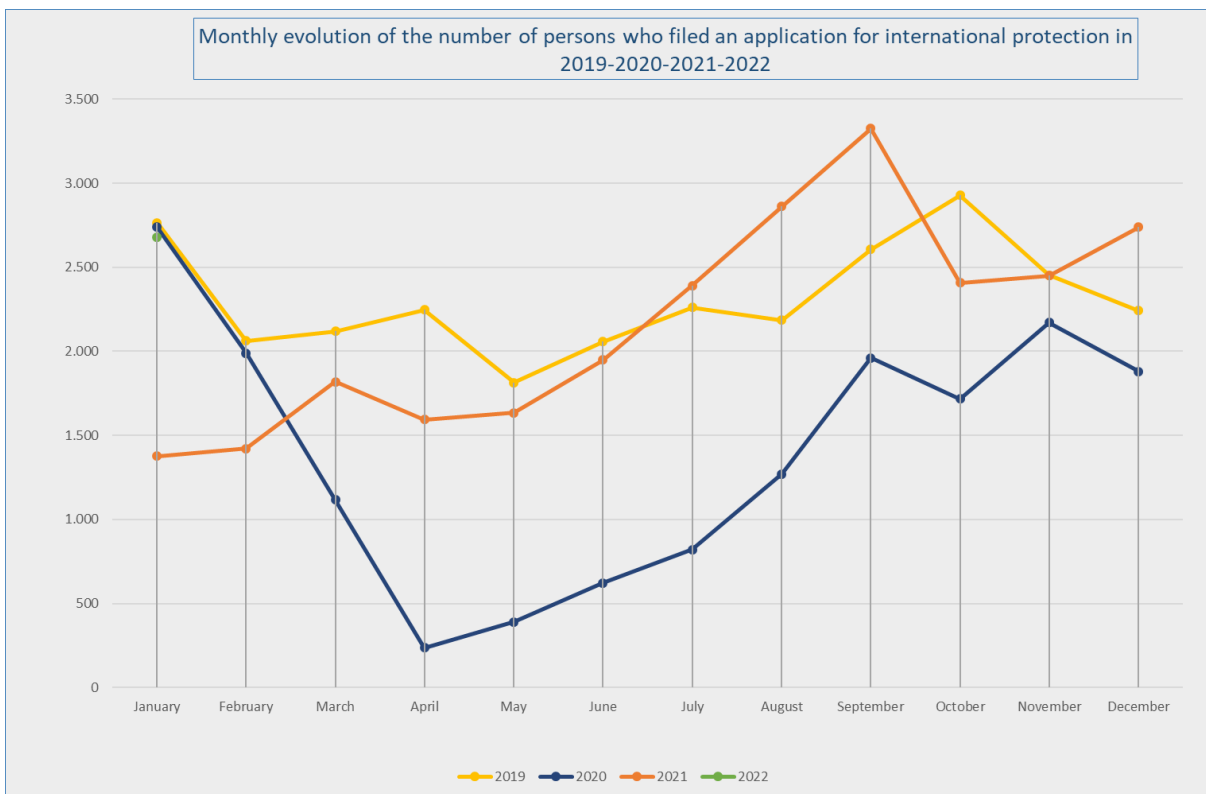
Contact person : Damien Dermaux

Damien.Dermaux@ibz.fgov.be

02 205 54 83

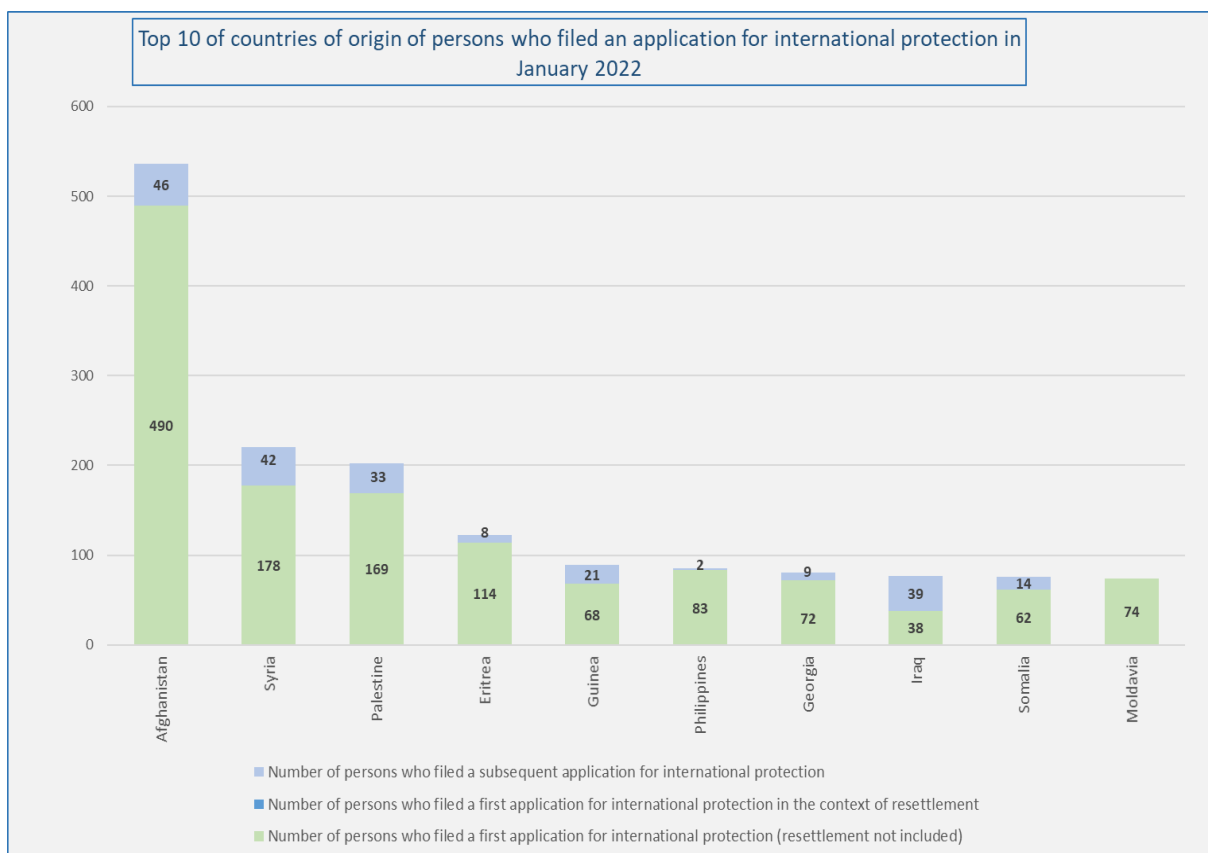
APPLICATIONS FOR INTERNATIONAL PROTECTION (Source: Immigration Office)

Number of persons who filed an application for international protection in 2021 and 2022				
	Total number of persons who filed an application for international protection 2021	Number of persons who filed a first application for international protection 2021 (resettlement not included)	Number of persons who filed a first application for international protection 2021 in the context of resettlement	Number of persons who filed a subsequent application for international protection 2021
January	1.377	957	0	420
February	1.422	964	0	458
March	1.818	1.133	165	520
April	1.595	1.176	10	409
May	1.634	1.088	172	374
June	1.948	1.453	21	474
July	2.392	1.647	274	471
August	2.862	2.087	3	772
September	3.326	2.619	237	470
October	2.407	2.033	15	359
November	2.451	2.020	47	384
December	2.739	2.413	5	321
Total	25.971	19.590	949	5432
	Total number of persons who filed an application for international protection 2022	Number of persons who filed a first application for international protection 2022 (resettlement not included)	Number of persons who filed a first application for international protection 2022 in the context of resettlement	Number of persons who filed a subsequent application for international protection 2022
January	2.680	2.208	15	457
February				
March				
April				
May				
June				
July				
August				
September				
October				
November				
December				
Total	2.680	2.208	15	457



TOP 10 OF COUNTRIES OF ORIGIN (Source: Immigration Office)

Top 10 of countries of origin of persons who filed an application for international protection in January 2022					
	Country of origin	Total number of persons who filed an application for international protection	Number of persons who filed a first application for international protection (resettlement not included)	Number of persons who filed a first application for international protection in the context of resettlement	Number of persons who filed a subsequent application for international protection
1	Afghanistan	536	490	0	46
2	Syria	220	178	0	42
3	Palestine	202	169	0	33
4	Eritrea	122	114	0	8
5	Guinea	89	68	0	21
6	Philippines	85	83	0	2
7	Georgia	81	72	0	9
8	Iraq	77	38	0	39
9	Somalia	76	62	0	14
10	Moldavia	74	74	0	0
	Other countries	1.118	860	15	243
	Total January	2.680	2.208	15	457



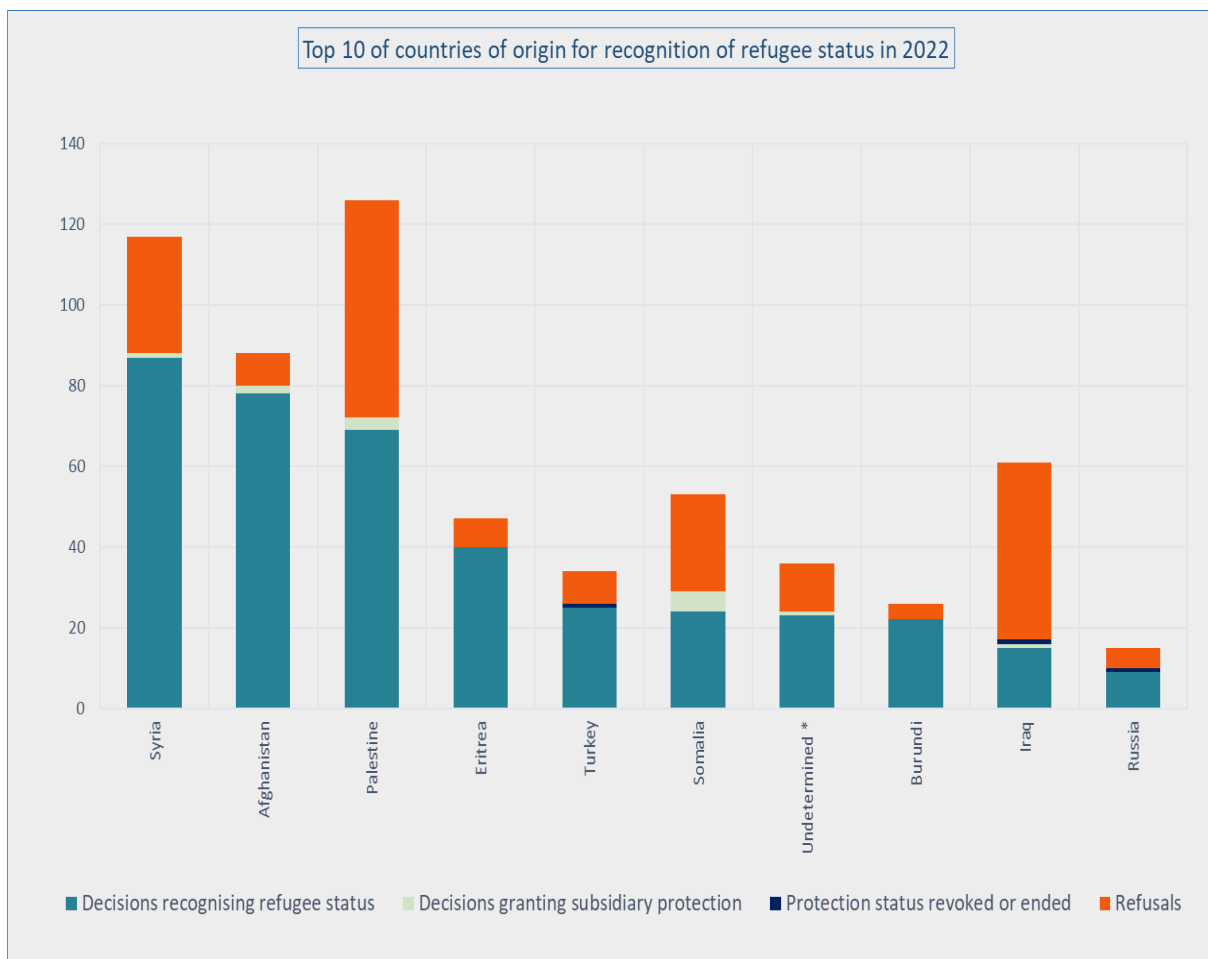
DECISIONS (Source: CGRS)

Number of persons who received a decision regarding their application for international protection													
Decisions	Jan	Feb	Mar	Apr	May	Jun	Jul	Aug	Sep	Oct	Nov	Dec	Tot
Intermediary decisions													
Number of persons for whom a further assessment (border) was decided + number of persons whose subsequent application was declared admissible	57												57
Final decisions													
Number of persons who received a decision granting refugee status	459												459
Number of persons who received a decision granting subsidiary protection status	27												27
Number of persons whose application was declared inadmissible	224												224
Number of persons whose application was considered manifestly unfounded	49												49
Number of persons who received a decision refusing refugee status and refusing subsidiary protection status	296												296
Number of persons whose status was ended or revoked	5												5
Total number of persons who received a decision regarding their application for international protection	1.117												1.117

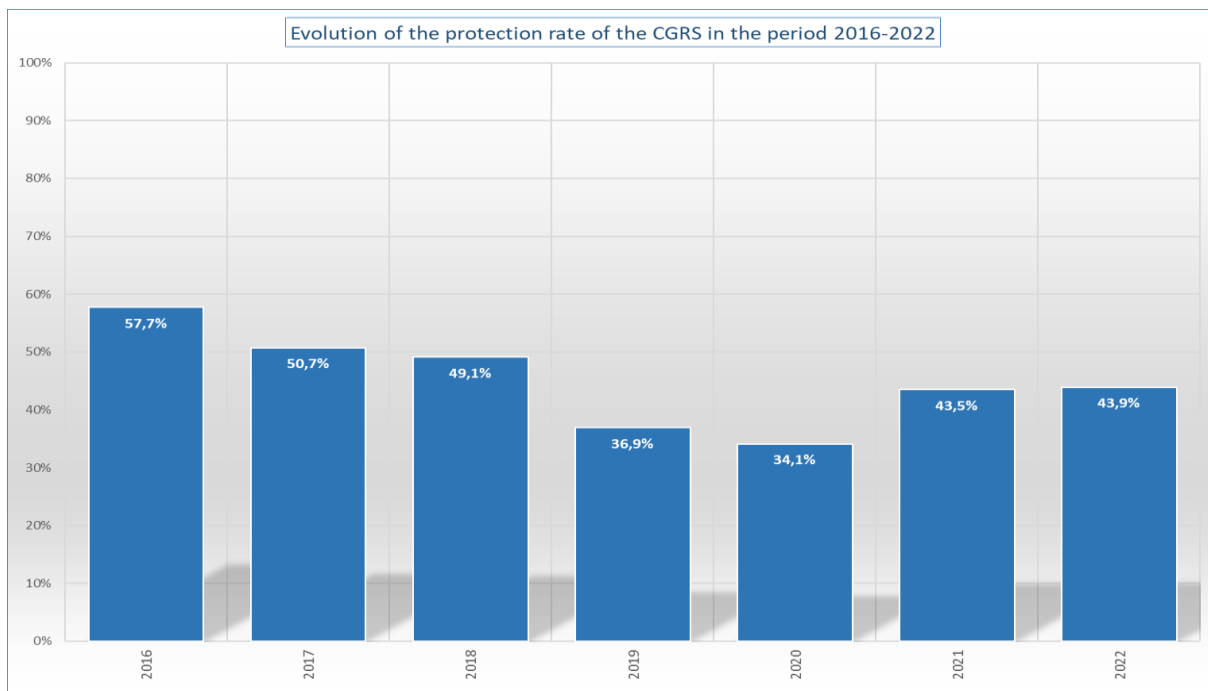
Decisions	Number of decisions (cases)												Tot
	Jan	Feb	Mar	Apr	May	Jun	Jul	Aug	Sep	Oct	Nov	Dec	
Intermediary decisions													
Further assessment (border) + subsequent application declared admissible	54												54
Final decisions													
Recognition of refugee status (RS)	342												342
Granting of subsidiary protection status (SP)	26												26
Application declared inadmissible	187												187
Application considered manifestly unfounded	38												38
Refusal of refugee status and refusal of subsidiary protection status	246												246
Protection status revoked or ended	5												5
Total number of decisions	898												898

Top 10 of countries of origin for recognition of refugee status in 2022						
	Country of origin	Decisions recognising refugee status	Decisions granting subsidiary protection	Protection status revoked or ended	Refusals	Total number of final decisions *
1	Syria	87	1	0	29	117
2	Afghanistan	78	2	0	8	88
3	Palestine	69	3	0	54	126
4	Eritrea	40	0	0	7	47
5	Turkey	25	0	1	8	34
6	Somalia	24	5	0	24	53
7	Undetermined *	23	1	0	12	36
8	Burundi	22	0	0	4	26
9	Iraq	15	1	1	44	61
10	Russia	9	0	1	5	15
	Other countries	67	14	2	374	457
	Total 2022	459	27	5	569	1.060

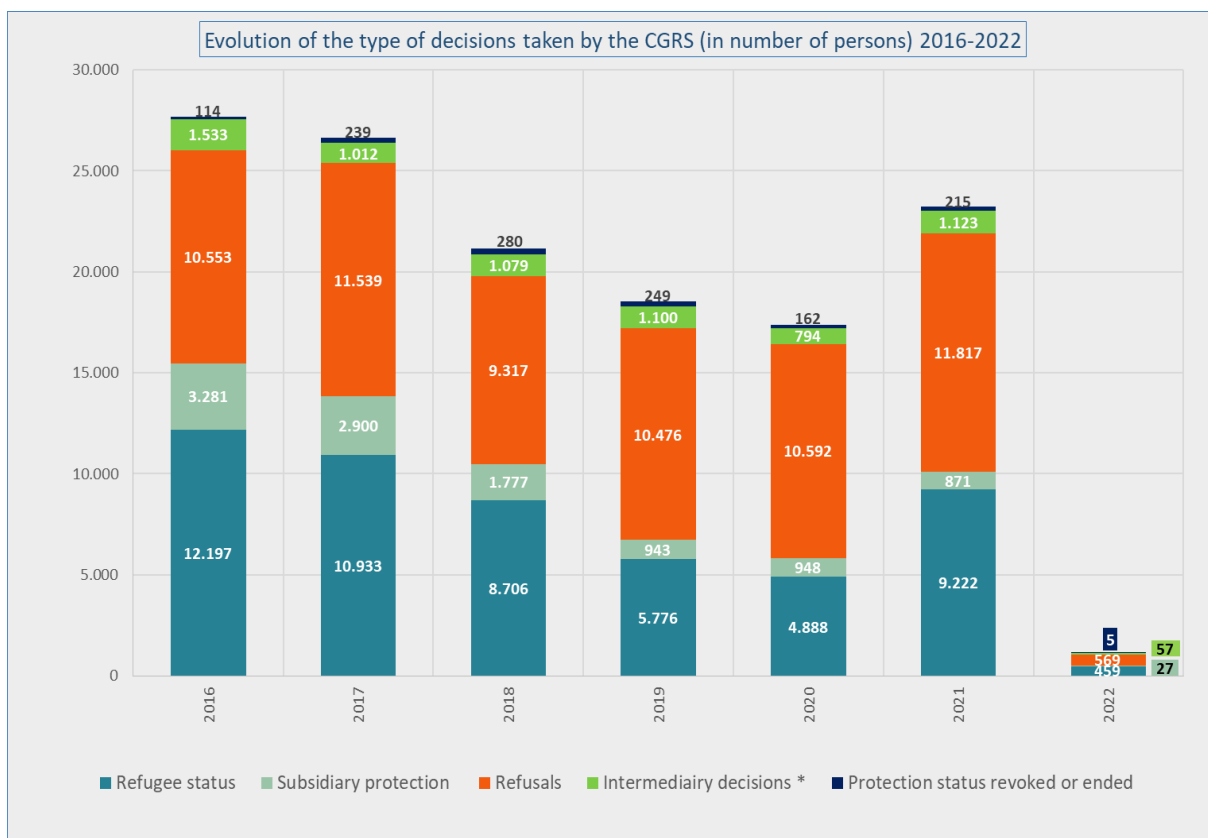
* The decisions 'further assessment (border) and subsequent application declared admissible' are a kind of intermediary decision and are therefore **not included** in the final decisions.



* 'Undetermined' includes persons whose nationality could not be ascertained, stateless persons,...



* The protection rate is the percentage of applications leading to recognition of refugee status or granting of subsidiary protection status compared to the total number of final decisions (= total number of decisions – the intermediary decisions) - the number of files where the protection status was revoked or ended.



* 'Intermediary decisions' are the decisions 'further assessment (border) and subsequent application declared admissible.'

CASELOAD (Source: CGRS)

At the end of January 2022, the total workload amounted to **16,216** cases (19.414 persons). In view of the current inflow, a volume of **4,200** dossiers can be considered as a normal caseload. The actual backlog amounts to **12,016** cases.

