

## ASYLUM STATISTICS MARCH 2022

## SURVEY

APPLICATIONS FOR INTERNATIONAL PROTECTION	March 2022	2022
Number of persons who filed a first application for international protection (resettlement not included)	2.922	7.015
Number of persons who filed a first application for international protection in the context of resettlement	8	23
Number of persons who filed a subsequent application for international protection	317	1.179
<b>Total number of persons who filed an application for international protection</b>	<b>3.247</b>	<b>8.217</b>
DECISIONS	March 2022	2022
Intermediary decisions		
Number of persons for whom a further assessment (border) was decided + number of persons whose subsequent application was declared admissible	58	207
Final decisions		
Number of persons who received a decision granting refugee status	632	1.849
Number of persons who received a decision granting subsidiary protection status	36	98
Number of persons whose application was declared inadmissible	562	1.071
Number of persons whose application was considered manifestly unfounded	61	242
Number of persons who received a decision refusing refugee status and refusing subsidiary protection status	872	1.684
Number of persons whose status was ended or revoked	19	38
<b>Total number of persons who received a decision regarding their application for international protection</b>	<b>2.240</b>	<b>5.189</b>
CASELOAD	End of March 2022	
	<b>16.412 cases</b>	

Date of publication: April 2022

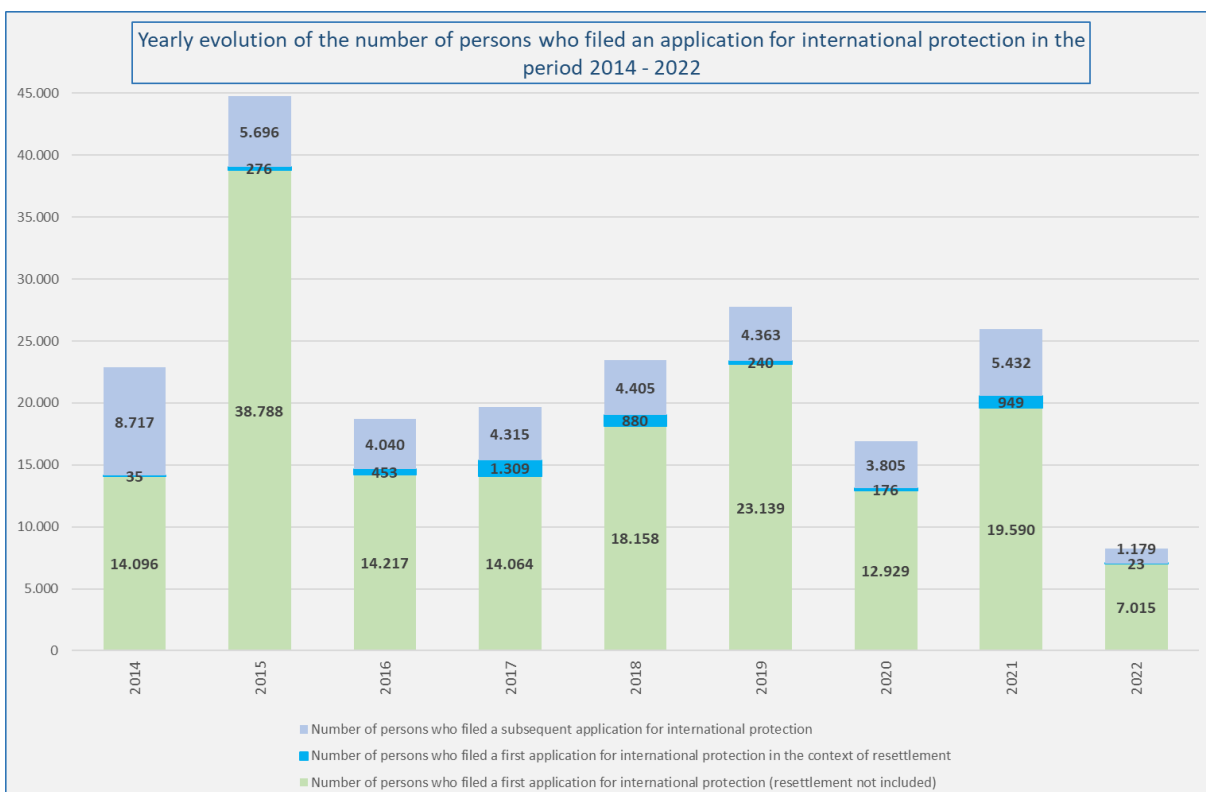
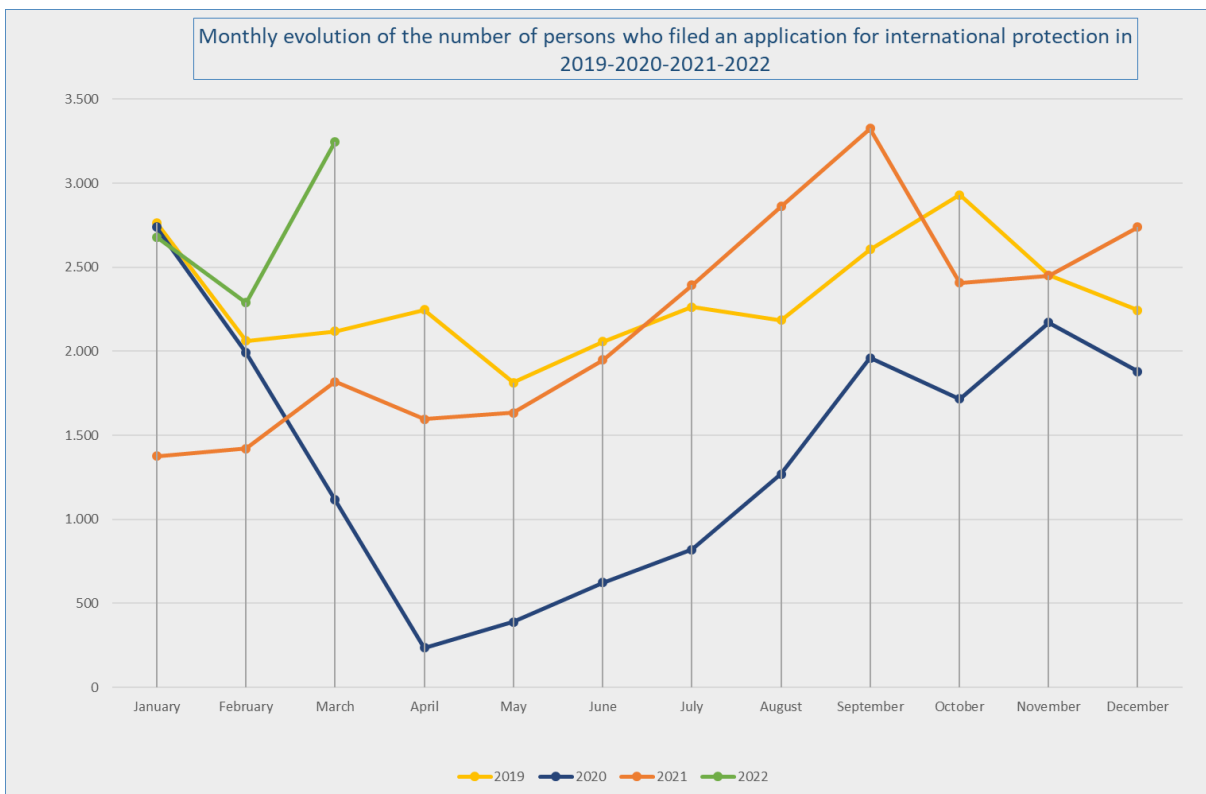
Contact person : Damien Dermaux

[Damien.Dermaux@ibz.fgov.be](mailto:Damien.Dermaux@ibz.fgov.be)

02 205 54 83

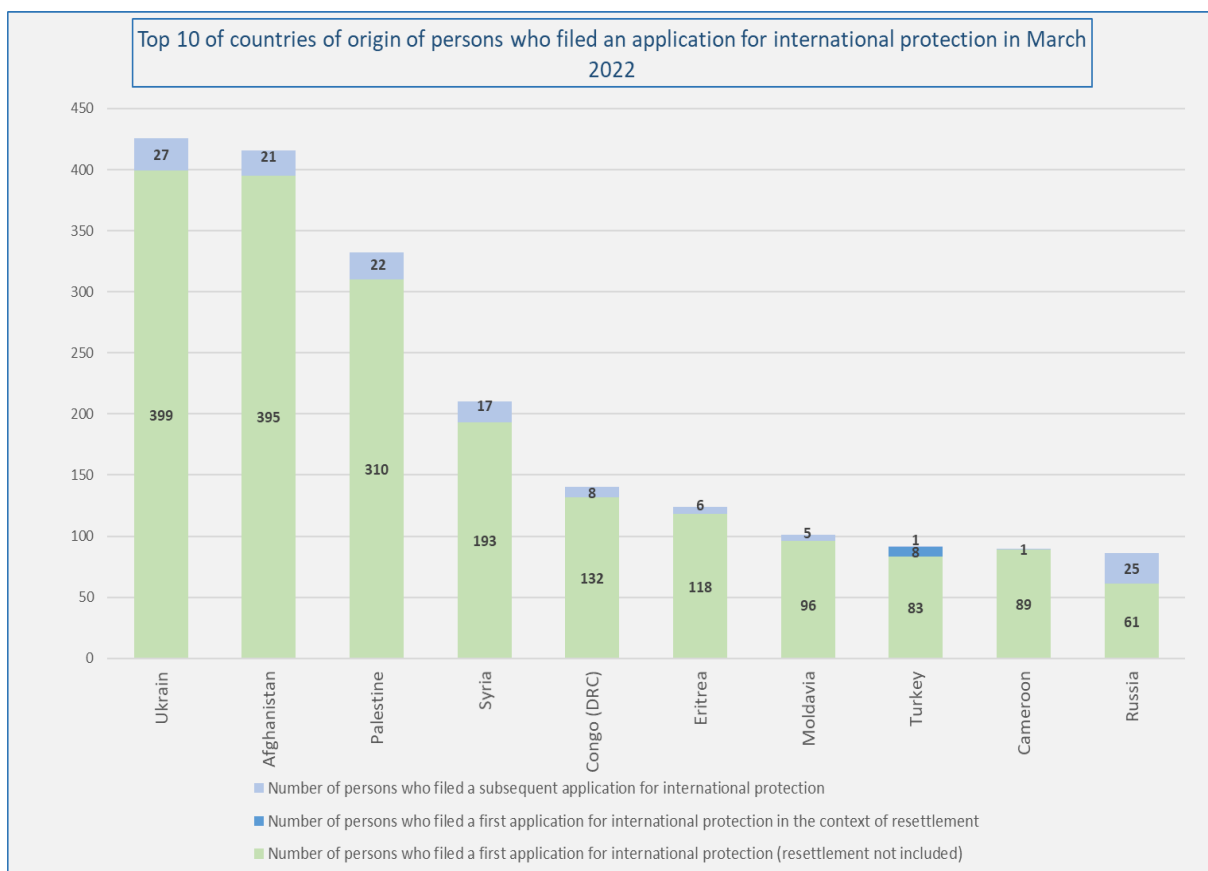
## APPLICATIONS FOR INTERNATIONAL PROTECTION (Source: Immigration Office)

<b>Number of persons who filed an application for international protection in 2021 and 2022</b>				
	<b>Total number of persons who filed an application for international protection 2021</b>	<b>Number of persons who filed a first application for international protection 2021 (resettlement not included)</b>	<b>Number of persons who filed a first application for international protection 2021 in the context of resettlement</b>	<b>Number of persons who filed a subsequent application for international protection 2021</b>
January	1.377	957	0	420
February	1.422	964	0	458
March	1.818	1.133	165	520
April	1.595	1.176	10	409
May	1.634	1.088	172	374
June	1.948	1.453	21	474
July	2.392	1.647	274	471
August	2.862	2.087	3	772
September	3.326	2.619	237	470
October	2.407	2.033	15	359
November	2.451	2.020	47	384
December	2.739	2.413	5	321
<b>Total</b>	<b>25.971</b>	<b>19.590</b>	<b>949</b>	<b>5432</b>
	<b>Total number of persons who filed an application for international protection 2022</b>	<b>Number of persons who filed a first application for international protection 2022 (resettlement not included)</b>	<b>Number of persons who filed a first application for international protection 2022 in the context of resettlement</b>	<b>Number of persons who filed a subsequent application for international protection 2022</b>
January	2.680	2.208	15	457
February	2.290	1.885	0	405
March	3.247	2.922	8	317
April				
May				
June				
July				
August				
September				
October				
November				
December				
<b>Total</b>	<b>8.217</b>	<b>7.015</b>	<b>23</b>	<b>1.179</b>

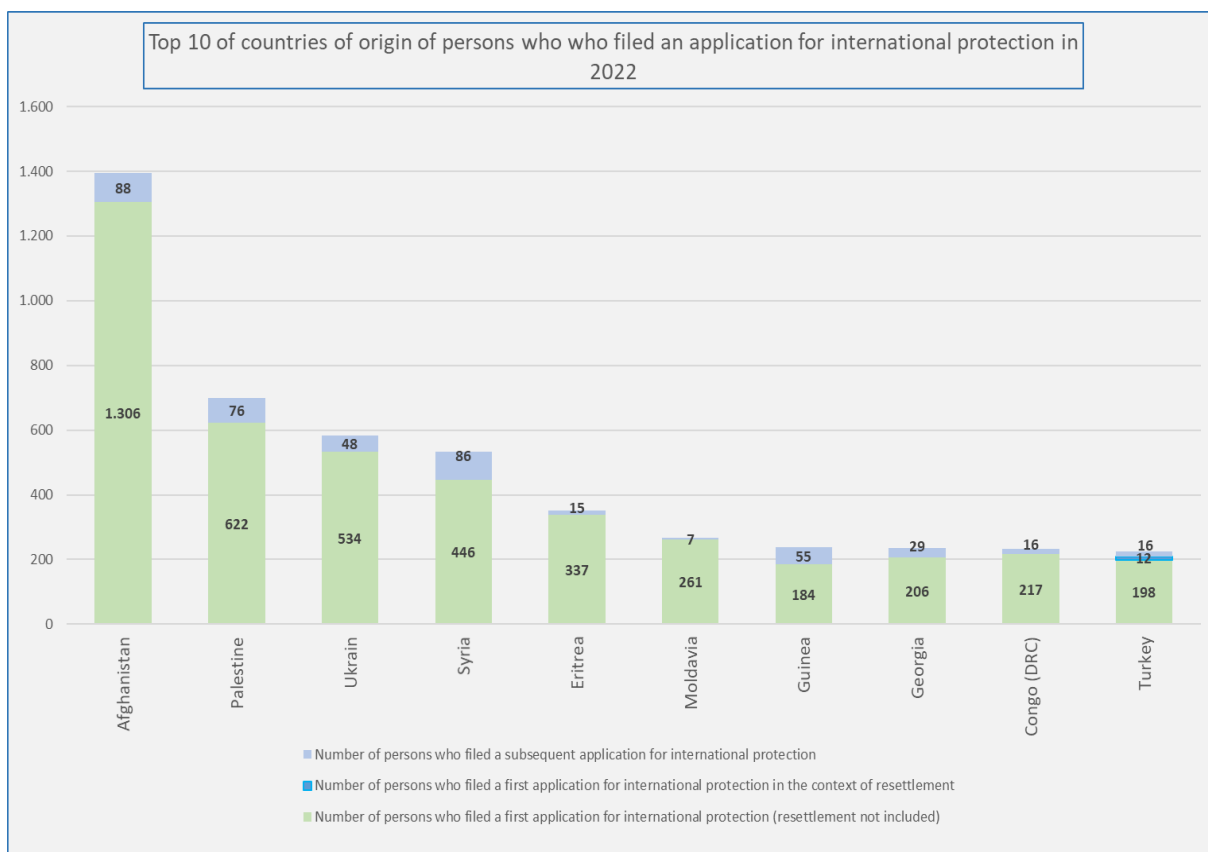


TOP 10 OF COUNTRIES OF ORIGIN (Source: Immigration Office )

Top 10 of countries of origin of persons who filed an application for international protection in March 2022					
	Country of origin	Total number of persons who filed an application for international protection	Number of persons who filed a first application for international protection (resettlement not included)	Number of persons who filed a first application for international protection in the context of resettlement	Number of persons who filed a subsequent application for international protection
1	Ukrain	426	399	0	27
2	Afghanistan	416	395	0	21
3	Palestine	332	310	0	22
4	Syria	210	193	0	17
5	Congo (DRC)	140	132	0	8
6	Eritrea	124	118	0	6
7	Moldavia	101	96	0	5
8	Turkey	92	83	8	1
9	Cameroon	90	89	0	1
10	Russia	86	61	0	25
	Other countries	1.230	1.046	0	184
	Total March	3.247	2.922	8	317



Top 10 of countries of origin of persons who who filed an application for international protection in 2022					
	Country of origin	Total number of persons who filed an application for international protection	Number of persons who filed a first application for international protection (resettlement not included)	Number of persons who filed a first application for international protection in the context of resettlement	Number of persons who filed a subsequent application for international protection
1	Afghanistan	1.394	1.306	0	88
2	Palestine	698	622	0	76
3	Ukrain	582	534	0	48
4	Syria	532	446	0	86
5	Eritrea	352	337	0	15
6	Moldavia	268	261	0	7
7	Guinea	239	184	0	55
8	Georgia	235	206	0	29
9	Congo (DRC)	233	217	0	16
10	Turkey	226	198	12	16
	Other countries	3.458	2.704	11	743
	<b>Total 2022</b>	<b>8.217</b>	<b>7.015</b>	<b>23</b>	<b>1.179</b>



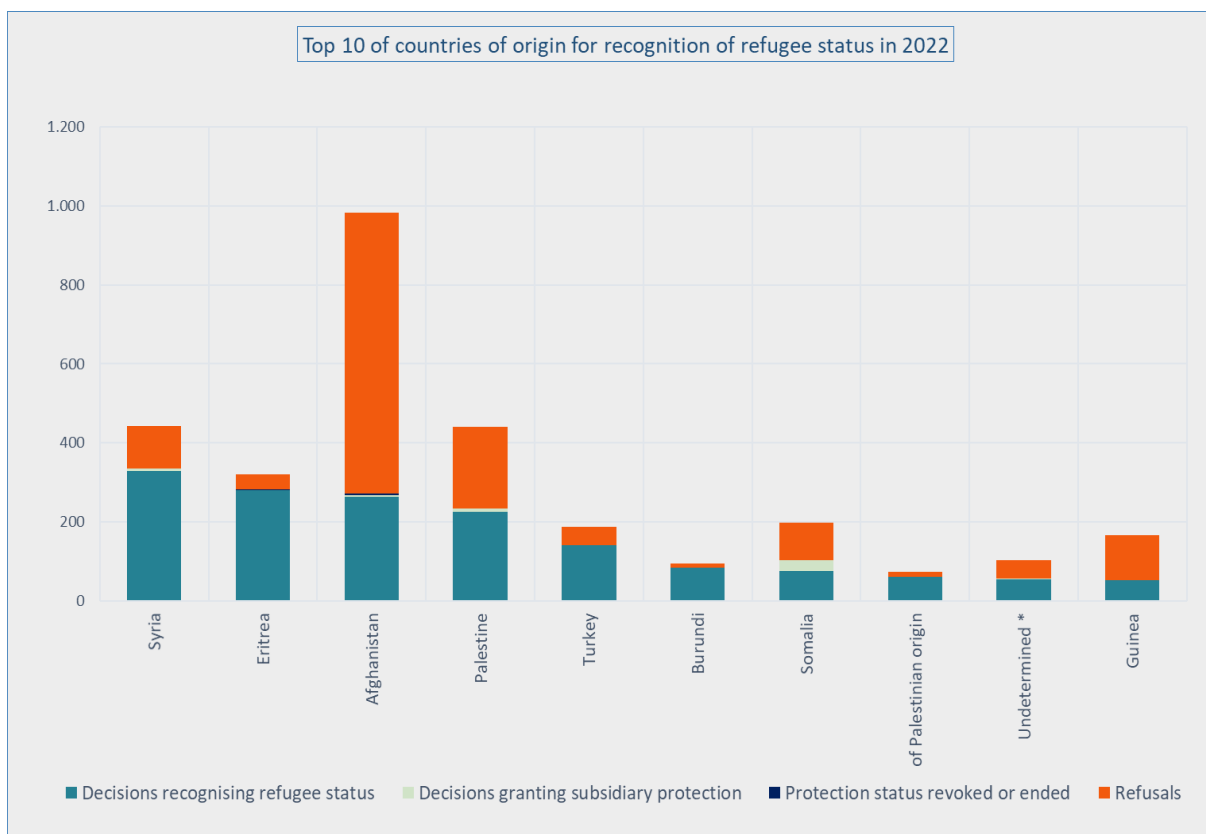
## DECISIONS (Source: CGRS)

Number of persons who received a decision regarding their application for international protection													
Decisions	Jan	Feb	Mar	Apr	May	Jun	Jul	Aug	Sep	Oct	Nov	Dec	Tot
<b>Intermediary decisions</b>													
Number of persons for whom a further assessment (border) was decided + number of persons whose subsequent application was declared admissible	57	92	58										207
<b>Final decisions</b>													
Number of persons who received a decision granting refugee status	460	757	632										1.849
Number of persons who received a decision granting subsidiary protection status	27	35	36										98
Number of persons whose application was declared inadmissible	224	285	562										1.071
Number of persons whose application was considered manifestly unfounded	49	132	61										242
Number of persons who received a decision refusing refugee status and refusing subsidiary protection status	296	516	872										1.684
<b>Number of persons whose status was ended or revoked</b>	5	14	19										38
<b>Total number of persons who received a decision regarding their application for international protection</b>	1.118	1.831	2.240										5.189

Number of decisions (cases)													
Decisions	Jan	Feb	Mar	Apr	May	Jun	Jul	Aug	Sep	Oct	Nov	Dec	Tot
<b>Intermediary decisions</b>													
Further assessment (border) + subsequent application declared admissible	54	72	51										177
<b>Final decisions</b>													
Recognition of refugee status (RS)	342	579	497										1.418
Granting of subsidiary protection status (SP)	26	31	33										90
Application declared inadmissible	187	225	501										913
Application considered manifestly unfounded	38	77	46										161
Refusal of refugee status and refusal of subsidiary protection status	246	435	780										1.461
<b>Protection status revoked or ended</b>	<b>5</b>	<b>9</b>	<b>17</b>										<b>31</b>
<b>Total number of decisions</b>	<b>898</b>	<b>1.428</b>	<b>1.925</b>	<b>0</b>	<b>0</b>	<b>0</b>	<b>0</b>	<b>0</b>	<b>0</b>	<b>0</b>	<b>0</b>	<b>0</b>	<b>4.251</b>

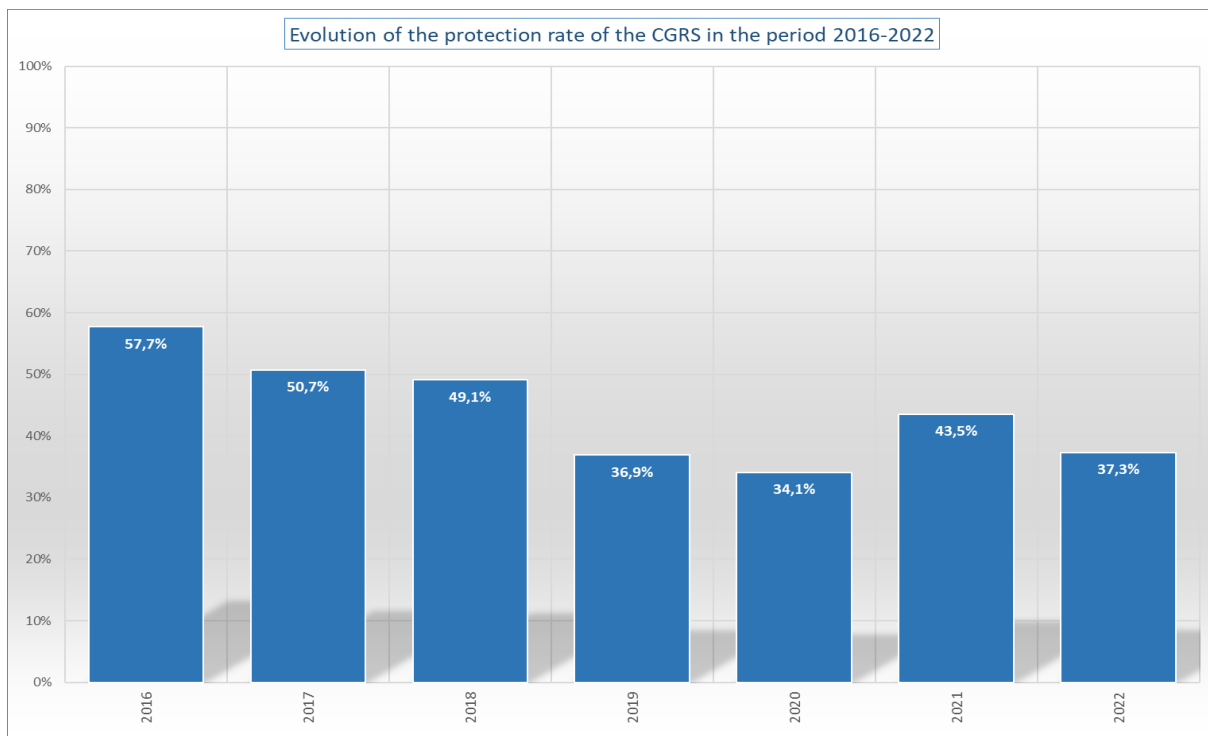
Top 10 of countries of origin for recognition of refugee status in 2022						
	Country of origin	Decisions recognising refugee status	Decisions granting subsidiary protection	Protection status revoked or ended	Refusals	Total number of final decisions *
1	Syria	328	8	0	106	442
2	Eritrea	281	0	1	38	320
3	Afghanistan	264	4	3	711	982
4	Palestine	226	7	1	207	441
5	Turkey	140	0	1	46	187
6	Burundi	84	0	1	9	94
7	Somalia	76	26	0	95	197
8	of Palestinian origin	61	0	0	12	73
9	Undetermined *	55	1	0	47	103
10	Guinea	52	0	0	115	167
	Other countries	282	52	31	1.611	1.976
	<b>Total 2022</b>	<b>1.849</b>	<b>98</b>	<b>38</b>	<b>2.997</b>	<b>4.982</b>

\* The decisions 'further assessment (border) and subsequent application declared admissible' are a kind of intermediary decision and are therefore **not included** in the final decisions.

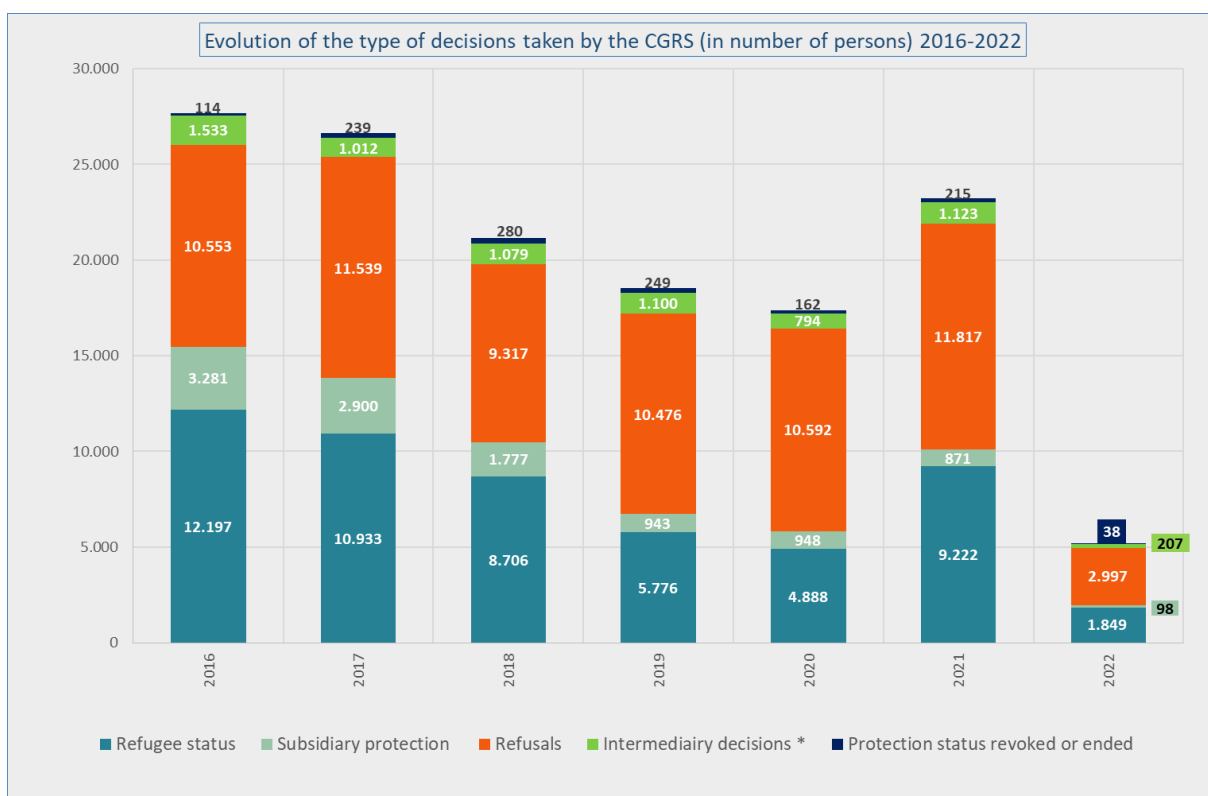


\* 'Undetermined' includes persons whose nationality could not be ascertained, stateless persons,...





\* The protection rate is the percentage of applications leading to recognition of refugee status or granting of subsidiary protection status compared to the total number of final decisions (= total number of decisions – the intermediary decisions) - the number of files where the protection status was revoked or ended.



\* 'Intermediary decisions' are the decisions 'further assessment (border) and subsequent application declared admissible.'

CASELOAD (Source: CGRS)

At the end of March 2022, the total workload amounted to **16,412** cases (19,620 persons). In view of the current inflow, a volume of **4,200** dossiers can be considered as a normal caseload. The actual backlog amounts to **12,212** cases.

